

**CORRECTIVE SERVICES**

AUSTRALIA

EMBARGO: 11.30AM (CANBERRA TIME) THURS 19 JUN 2008

C O N T E N T S

	<i>page</i>
Notes	2
Summary of findings	3

TABLES

1 Persons in corrective services, quarterly comparisons	8
2 Persons in full-time custody	10
3 Imprisonment rates	11
4 Persons in full-time custody, by sex	12
5 Imprisonment rates, by sex	13
6 Indigenous persons in full-time custody, by sex	14
7 Indigenous imprisonment rates, by sex	15
8 Persons in full-time custody, by type of custody	16
9 Imprisonment rates, by type of custody	17
10 Persons in full-time custody, by legal status	18
11 Imprisonment rates, by legal status	19
12 Indigenous persons in full-time custody, by legal status	20
13 Indigenous imprisonment rates, by legal status	21
14 Sentenced prisoner receptions into full-time custody	22
15 Persons in periodic detention, by sex	23
16 Federal sentenced persons in full-time custody, by sex	24
17 Persons in community-based corrections, by sex	25
18 Community-based corrections rates, by sex	26
19 Persons in community-based corrections, by type of order	27

ADDITIONAL INFORMATION

Explanatory Notes	29
Appendix Experimental Community-Based Corrections Data	36
Glossary	40

I N Q U I R I E S

For further information about these and related statistics, contact the National Information and Referral Service on 1300 135 070 or Terence Byrnes on Melbourne (03) 9615 7681.

NOTES

FORTHCOMING ISSUES

ISSUE (Quarter)

RELEASE DATE

June 2008

18 September 2008



ABOUT THIS PUBLICATION

This publication presents information on persons in custody and community-based corrections. The statistics are derived from information provided to the Australian Bureau of Statistics (ABS) from administrative records held by corrective services agencies in each state and territory, and from the Australian Government Attorney-General's Department for details on federal prisoners. Details are provided for each state and territory on: prisoner numbers and imprisonment rates by type of custody (i.e. open or secure custody or periodic detention); prisoner numbers by legal status (sentenced or unsentenced) for all prisoners and for Indigenous prisoners; the number of sentenced receptions into custody; the number of federal prisoners; and the numbers and rates of persons serving community-based corrections orders. Experimental data on the Indigenous status of persons in community-based corrections are also included in the Appendix.

The ABS acknowledges the valuable contribution of the Board of Management and the Advisory Group of the National Corrective Services Statistics Unit as well as the staff of the various agencies that provide the statistics that are presented in this publication.

FURTHER INFORMATION

More information about ABS activities in the field of crime and justice statistics is available from the Crime and Justice theme page on the ABS website <www.abs.gov.au>. Details of other ABS publications relating to Crime and Justice statistics can be found in paragraphs 49–50 of the Explanatory Notes.



ABBREVIATIONS

ABS	Australian Bureau of Statistics
ACT	Australian Capital Territory
Aust.	Australia
ERP	estimated resident population
NCCJS	National Centre for Crime and Justice Statistics, Australian Bureau of Statistics
NSW	New South Wales
NT	Northern Territory
Qld	Queensland
SA	South Australia
Tas.	Tasmania
Vic.	Victoria
WA	Western Australia

Brian Pink
Australian Statistician

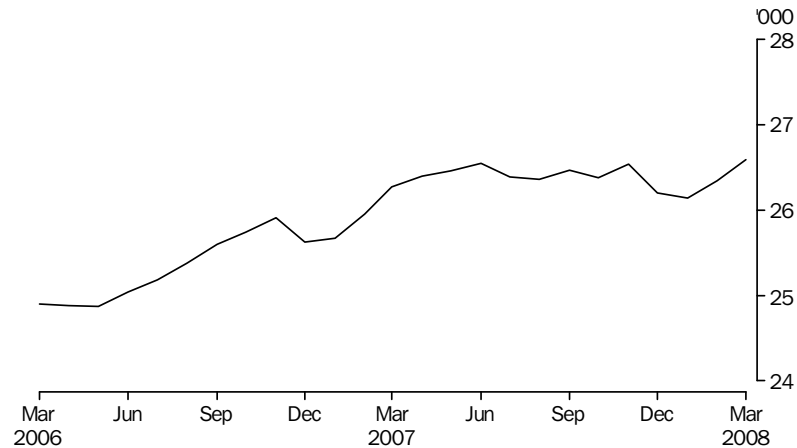
SUMMARY OF FINDINGS

PERSONS IN CORRECTIVE SERVICES

Based on first day of the month averages, for the March quarter 2008, there were 80,453 persons under the authority of corrective services (excluding those in periodic detention). The total comprised 26,268 persons in full-time custody and 54,185 persons in community-based corrections. This represents an increase of 4% (2,965 persons) from the March quarter 2007. From the March quarter 2007, persons in full-time custody increased by 2% (467 persons) and persons in community-based corrections increased by 5% (2,498 persons).

PERSONS IN CUSTODY Number of prisoners

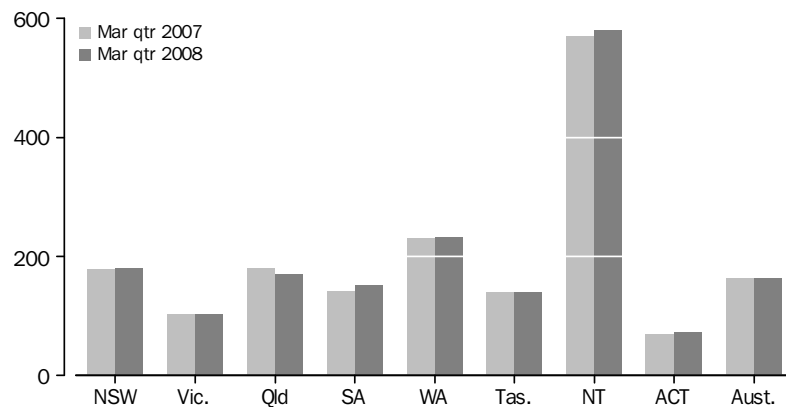
PERSONS IN PRISON CUSTODY, Average daily number per month



The average daily number of full-time prisoners in Australia in the March quarter 2008 was 26,359. This was a decrease of less than 1% on the December quarter 2007, and an increase of 2% from the March quarter 2007.

Rates per 100,000 adults

AVERAGE DAILY IMPRISONMENT RATE(a), By states and territories



(a) Rate per 100,000 adult population.

Nationally, the March quarter 2008 average daily imprisonment rate was 163 prisoners per 100,000 adult population, a decrease of less than 1% from the March quarter 2007 (163 prisoners). The Northern Territory had the highest imprisonment rate (580 prisoners per 100,000 adult population), followed by Western Australia (233) and New South Wales (180).

SUMMARY OF FINDINGS *continued*

Rates per 100,000 adults continued

The Australian Capital Territory (including Australian Capital Territory prisoners held in New South Wales prisons) and Victoria had the lowest imprisonment rates (72 and 102 prisoners per 100,000 adults respectively).

The largest proportional increase in imprisonment rates from the March quarter 2007 was recorded in South Australia (8%). The largest proportional decrease over the same period was recorded in Queensland (6%).

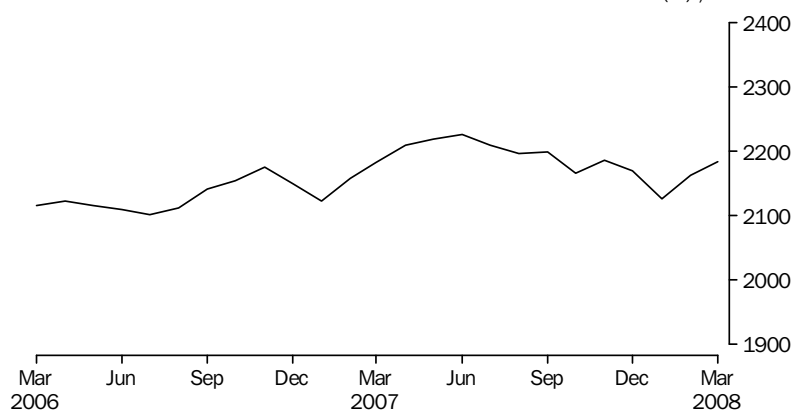
Sex

Of the average daily number of full-time prisoners in Australia in the March quarter 2008, 24,506 (93%) were male and 1,853 (7%) were female. The average daily imprisonment rate for males was 307 prisoners per 100,000 adult male population, while for females it was 23 prisoners per 100,000 adult female population. Males were almost 14 times more likely to be in prison than females.

Indigenous Prisoners

The average daily number of full-time Indigenous adult prisoners in Australia in the March quarter 2008 was 6,507, comprising 5,938 (91%) males and 569 (9%) females. Almost 78% of the total Indigenous prisoner population was located in New South Wales (2,028), Western Australia (1,551) and Queensland (1,466).

AVERAGE DAILY INDIGENOUS IMPRISONMENT RATE (a), Per month



(a) Rate per 100,000 adult Indigenous population.

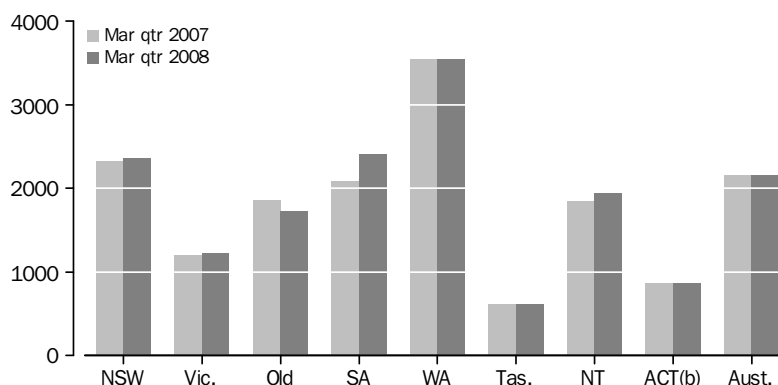
The national average daily Indigenous imprisonment rate in the March quarter 2008 was 2,157 per 100,000 adult Indigenous population, a decrease of less than 1% from the previous quarter and an increase of less than 1% from the March quarter 2007.

The highest Indigenous imprisonment rate was recorded in Western Australia (3,554 Indigenous prisoners per 100,000 adult Indigenous population), followed by South Australia (2,407) and New South Wales (2,363).

SUMMARY OF FINDINGS *continued*

Indigenous Prisoners continued

AVERAGE DAILY INDIGENOUS IMPRISONMENT RATE(a), By states and territories



(a) Rate per 100,000 adult Indigenous population.

(b) Apparent variations in ACT rates may be as a result of small counts, see tables 6 and 7.

The largest proportional increase in the Indigenous imprisonment rate from the March quarter 2007 was recorded in South Australia (16%).

Different age profiles of the Indigenous and non-Indigenous population can affect the imprisonment rate numbers. The quarterly collection is unable to take age into account; however, data from the Prisoner Census collection can provide this level of detail.

The national age standardised Indigenous imprisonment rate from the annual Prisoner Census conducted at June 2007 was over 13 times higher (1,787 per 100,000 adult Indigenous population) than the rate for non-Indigenous persons (134 per 100,000 adult non-Indigenous population). Further information on the comparison of imprisonment rates between Indigenous and non-Indigenous populations can be found in *Prisoners in Australia 2007* (cat.no.4517.0).

Type of full-time custody

The average daily number of prisoners in secure prison custody in the March quarter 2008 was 20,147 (76% of prisoners in full-time custody). Open prison custody comprised 6,212 (24%) prisoners.

In the March quarter 2008, all prisoners held in full-time custody in the Australian Capital Territory were in secure custody. Of the other states and territories, Victoria, Queensland and South Australia had the highest proportion of prisoners in secure custody (90%, 90% and 89% respectively). New South Wales (including Australian Capital Territory prisoners held in New South Wales prisons) had the lowest proportion of prisoners in secure full-time custody (62%).

Legal status

The average number of prisoners in full-time custody on the first day of each month in the March quarter 2008 was 26,268, comprising an average of 19,882 (76%) sentenced and 6,386 (24%) unsentenced prisoners. Sentenced prisoners decreased by 2% from the previous quarter and increased by less than 1% from the March quarter 2007.

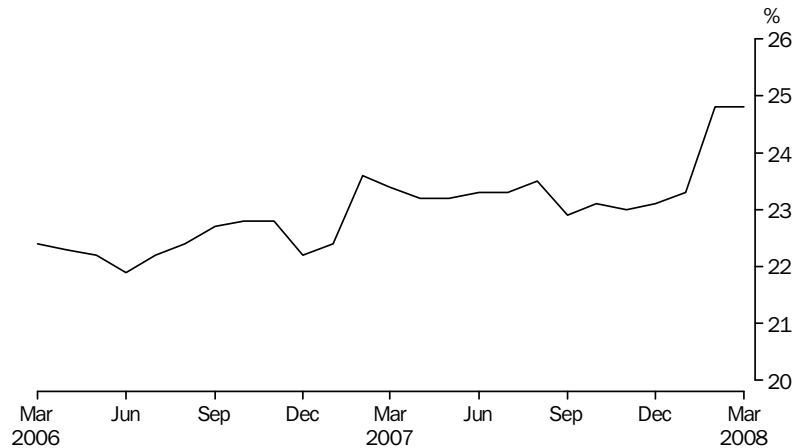
The average number of unsentenced prisoners on the first day of the month increased by 5% from the previous quarter and increased by 7% from the March quarter 2007. The Australian Capital Territory (including Australian Capital Territory prisoners held in New South Wales prisons) and South Australia had the highest proportions of

SUMMARY OF FINDINGS *continued*

Legal status continued

unsentenced prisoners (44% and 34% respectively). The lowest proportions of unsentenced prisoners were recorded in Victoria and Western Australia (both 19%).

UNSENTENCED PERSONS IN PRISON CUSTODY, Proportion per month



Sentenced Prisoner Receptions

There were 6,885 sentenced prisoner receptions into full-time custody in Australia in the March quarter 2008. The number of sentenced receptions decreased by 140 (2%) from the December quarter 2007, and increased by 482 (8%) from the March quarter 2007.

Periodic detention

Periodic detention is a form of custody or order where a sentenced prisoner is required to be held in custody on a part-time basis. This type of custody order is only used in New South Wales and the Australian Capital Territory. During the March quarter 2008, there was an average daily number of 696 persons in New South Wales and 43 persons in the Australian Capital Territory held in periodic detention. The rate of imprisonment for periodic detainees decreased by 10% in New South Wales, and decreased by 21% in the Australian Capital Territory from the December quarter 2007 to the March quarter 2008.

Federal prisoners

In the March quarter 2008, there were 670 federal prisoners in Australia, an increase of 25 (4%) from the March quarter 2007. More than half (397) of these federal prisoners were sentenced in New South Wales.

PERSONS IN COMMUNITY-BASED CORRECTIONS

Community-based corrections orders are non-custodial orders served under the authority of adult corrective services agencies and include restricted movement, fine option, community service, parole, bail, and sentenced probation. Unless otherwise specified figures are based on first day of the month. In the March quarter 2008, there were 54,185 persons in community-based corrections in Australia, an increase of less than 1% (362 persons) from the December quarter 2007 and an increase of 5% (2,498 persons) from the March quarter 2007.

Sex

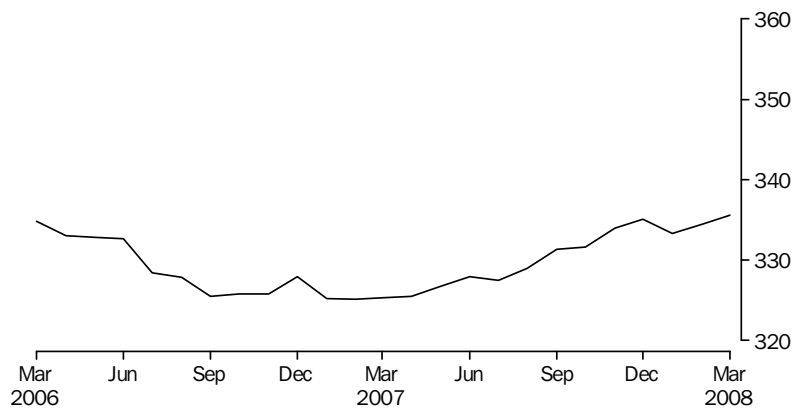
Of the average number of persons in community-based corrections in Australia in the March quarter 2008, 44,189 (82%) were male and 9,917 (18%) were female.

SUMMARY OF FINDINGS *continued*

Rates per 100,000 adults

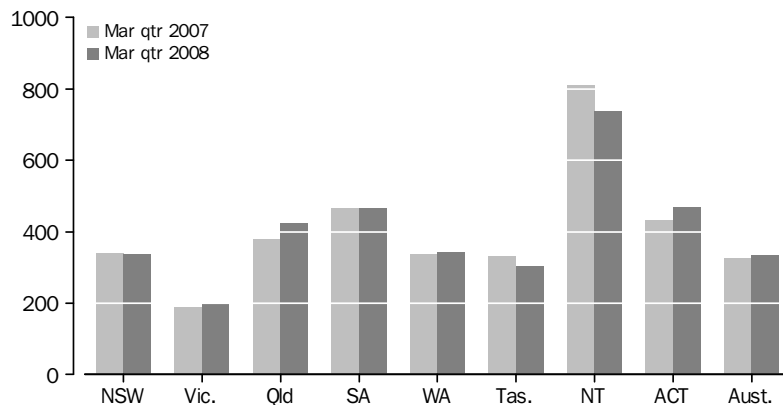
Nationally, the rate of persons in community-based corrections was 334 persons per 100,000 adult population for the March quarter 2008. This was an increase of 3% from the March quarter 2007 (325 persons per 100,000 adults). The largest increase from the March quarter 2007 was recorded in Queensland (11%). The largest decreases were recorded in Tasmania and the Northern Territory (both 9%).

COMMUNITY-BASED CORRECTIONS RATE(a), Per month



(a) Rate per 100,000 adult population.

COMMUNITY-BASED CORRECTIONS RATE(a), By states and territories



(a) Rate per 100,000 adult population.

In the March quarter 2008, the rate of community-based corrections for males was 554 per 100,000 adult male population compared to 121 females per 100,000 adult female population. Males were almost five times more likely to be in community-based corrections than females.

Type of orders

In the March quarter 2008, there were 11,518 persons serving parole orders following a period of imprisonment, an increase of 5% from the December quarter 2007. More than three quarters (79%) of persons serving parole orders were located in three states: New South Wales (4,161 persons), Queensland (3,420) and Victoria (1,476). The largest proportional increase in parole orders from the December quarter 2007 was recorded in Queensland (12%), followed by Western Australia (9%).

For this same period, there were 33,262 persons under sentenced probation and 9,685 persons serving community service orders.

PERSONS IN CORRECTIVE SERVICES, Quarterly comparisons(a)

	NSW(b)	Vic.	Qld(c)	SA	WA	Tas.	NT	ACT in ACT(d)	ACT in NSW(b)	ACT Total(e)	Aust.(b)(c)
AVERAGE DAILY NUMBER											
Males in full-time custody											
Mar Qtr 07	8 833	3 802	5 226	1 600	3 312	482	803	58	108	167	24 117
Dec Qtr 07	8 839	3 965	5 037	1 700	3 543	521	806	69	94	162	24 480
Mar Qtr 08	8 918	3 890	5 055	1 750	3 463	496	856	79	93	172	24 506
Females in full-time custody											
Mar Qtr 07	694	244	426	112	298	34	38	5	5	10	1 851
Dec Qtr 07	710	251	408	122	316	40	37	7	7	14	1 892
Mar Qtr 08	698	236	411	133	290	34	41	11	8	19	1 853
Persons in full-time custody											
Mar Qtr 07	9 527	4 046	5 651	1 712	3 610	516	841	63	113	176	25 968
Dec Qtr 07	9 550	4 216	5 446	1 822	3 859	561	843	75	101	176	26 372
Mar Qtr 08	9 616	4 126	5 466	1 882	3 753	530	896	90	101	191	26 359
Indigenous persons in full-time custody											
Mar Qtr 07	1 961	222	1 532	347	1 511	65	688	8	15	22	6 333
Dec Qtr 07	1 982	229	1 409	390	1 616	68	688	9	11	20	6 391
Mar Qtr 08	2 028	235	1 466	412	1 551	66	737	13	10	23	6 507
AVERAGE NUMBER ON FIRST DAY OF MONTH											
Unsentenced persons in full-time custody											
Mar Qtr 07	2 371	747	1 241	599	670	111	168	64	—	64	5 971
Dec Qtr 07	2 470	801	1 195	612	676	111	166	73	—	73	6 105
Mar Qtr 08	2 554	794	1 260	649	723	114	210	82	—	82	6 386
Sentenced persons in full-time custody											
Mar Qtr 07	7 127	3 271	4 374	1 100	2 901	394	663	—	109	109	19 830
Dec Qtr 07	7 089	3 439	4 245	1 222	3 214	455	673	—	101	102	20 338
Mar Qtr 08	7 050	3 316	4 159	1 235	3 026	405	691	1	101	102	19 882
Persons in full-time custody											
Mar Qtr 07	9 498	4 018	5 615	1 699	3 571	505	831	64	109	173	25 801
Dec Qtr 07	9 559	4 240	5 441	1 833	3 890	567	839	73	101	175	26 442
Mar Qtr 08	9 604	4 110	5 419	1 884	3 749	518	900	84	101	185	26 268
Males in community-based corrections(f)											
Mar Qtr 07	15 094	6 077	9 377	4 568	4 064	971	1 054	942	..	942	42 147
Dec Qtr 07	15 167	6 484	10 534	4 617	4 171	885	1 003	1 036	..	1 036	43 896
Mar Qtr 08	14 961	6 446	10 864	4 632	4 318	912	1 000	1 056	..	1 056	44 189
Females in community-based corrections(f)											
Mar Qtr 07	2 698	1 342	2 589	1 066	1 188	265	141	152	..	152	9 441
Dec Qtr 07	2 756	1 559	2 718	1 095	1 184	227	132	174	..	174	9 844
Mar Qtr 08	2 761	1 518	2 781	1 110	1 200	232	136	178	..	178	9 917
Persons in community-based corrections(f)(g)											
Mar Qtr 07	17 860	7 449	11 966	5 635	5 252	1 236	1 196	1 094	..	1 094	51 687
Dec Qtr 07	17 980	8 069	13 253	5 712	5 354	1 111	1 134	1 209	..	1 209	53 823
Mar Qtr 08	17 777	7 989	13 645	5 742	5 518	1 144	1 136	1 234	..	1 234	54 185

.. not applicable

— nil or rounded to zero (including null cells)

(a) For the calculation of quarterly figures – see Explanatory Notes, paragraph 5.

(b) Custodial data includes ACT prisoners held in NSW prisons. The ACT in NSW figures are a subset of the NSW figures and are not separately counted in the Australian totals – see Explanatory Notes, paragraph 17.

(c) Data prior to the September quarter 2007 may be slightly overstated – see Explanatory Notes, paragraph 39.

(d) Refers to unsentenced persons in ACT prison custody and may include some sentenced fine default only prisoners – see Explanatory Notes, paragraph 17.

(e) ACT in ACT figures and ACT in NSW figures may not add to ACT total due to rounding.

(f) With the exception of Vic. and Tas., includes persons with breached or suspended orders.

(g) Includes persons whose sex is unknown.

	NSW(b)	Vic.	Qld(c)	SA	WA	Tas.	NT	ACT in ACT(d)	ACT in NSW(b)	ACT Total(e)	Aust.(b)(c)
PERCENTAGE CHANGE (AVERAGE DAILY NUMBER)											
Males in full-time custody											
Mar Qtr 07 to Mar Qtr 08	1.0	2.3	-3.3	9.4	4.6	2.9	6.6	36.2	-13.9	3.0	1.6
Dec Qtr 07 to Mar Qtr 08	0.9	-1.9	0.4	2.9	-2.3	-4.8	6.2	14.5	-1.1	6.2	0.1
Females in full-time custody											
Mar Qtr 07 to Mar Qtr 08	0.6	-3.3	-3.5	18.8	-2.7	—	7.9	120.0	60.0	90.0	0.1
Dec Qtr 07 to Mar Qtr 08	-1.7	-6.0	0.7	9.0	-8.2	-15.0	10.8	57.1	14.3	35.7	-2.1
Persons in full-time custody											
Mar Qtr 07 to Mar Qtr 08	0.9	2.0	-3.3	9.9	4.0	2.7	6.5	42.9	-10.6	8.5	1.5
Dec Qtr 07 to Mar Qtr 08	0.7	-2.1	0.4	3.3	-2.7	-5.5	6.3	20.0	—	8.5	—
Indigenous persons in full-time custody											
Mar Qtr 07 to Mar Qtr 08	3.4	5.9	-4.3	18.7	2.6	1.5	7.1	62.5	-33.3	4.5	2.7
Dec Qtr 07 to Mar Qtr 08	2.3	2.6	4.0	5.6	-4.0	-2.9	7.1	44.4	-9.1	15.0	1.8
PERCENTAGE CHANGE (AVERAGE NUMBER ON FIRST DAY OF MONTH)											
Unsentenced persons in full-time custody											
Mar Qtr 07 to Mar Qtr 08	7.7	6.3	1.5	8.3	7.9	2.7	25.0	28.1	—	28.1	7.0
Dec Qtr 07 to Mar Qtr 08	3.4	-0.9	5.4	6.0	7.0	2.7	26.5	12.3	—	12.3	4.6
Sentenced persons in full-time custody											
Mar Qtr 07 to Mar Qtr 08	-1.1	1.4	-4.9	12.3	4.3	2.8	4.2	—	-7.3	-6.4	0.3
Dec Qtr 07 to Mar Qtr 08	-0.6	-3.6	-2.0	1.1	-5.8	-11.0	2.7	—	—	—	-2.2
Persons in full-time custody											
Mar Qtr 07 to Mar Qtr 08	1.1	2.3	-3.5	10.9	5.0	2.6	8.3	31.3	-7.3	6.9	1.8
Dec Qtr 07 to Mar Qtr 08	0.5	-3.1	-0.4	2.8	-3.6	-8.6	7.3	15.1	—	5.7	-0.7
Males in community-based corrections(f)											
Mar Qtr 07 to Mar Qtr 08	-0.9	6.1	15.9	1.4	6.3	-6.1	-5.1	12.1	..	12.1	4.8
Dec Qtr 07 to Mar Qtr 08	-1.4	-0.6	3.1	0.3	3.5	3.1	-0.3	1.9	..	1.9	0.7
Females in community-based corrections(f)											
Mar Qtr 07 to Mar Qtr 08	2.3	13.1	7.4	4.1	1.0	-12.5	-3.5	17.1	..	17.1	5.0
Dec Qtr 07 to Mar Qtr 08	0.2	-2.6	2.3	1.4	1.4	2.2	3.0	2.3	..	2.3	0.7
Persons in community-based corrections(f)(g)											
Mar Qtr 07 to Mar Qtr 08	-0.5	7.2	14.0	1.9	5.1	-7.4	-5.0	12.8	..	12.8	4.8
Dec Qtr 07 to Mar Qtr 08	-1.1	-1.0	3.0	0.5	3.1	3.0	0.2	2.1	..	2.1	0.7

.. not applicable

— nil or rounded to zero (including null cells)

(a) For the calculation of quarterly figures – see Explanatory Notes, paragraph 5.

(b) Custodial data includes ACT prisoners held in NSW prisons. The ACT in NSW figures are a subset of the NSW figures and are not separately counted in the Australian totals – see Explanatory Notes, paragraph 17.

(c) Data prior to the September quarter 2007 may be slightly overstated – see Explanatory Notes, paragraph 39.

(d) Refers to unsentenced persons in ACT prison custody and may include some sentenced fine default only prisoners – see Explanatory Notes, paragraph 17.

(e) ACT in ACT figures and ACT in NSW figures may not add to ACT total due to rounding.

(f) With the exception of Vic. and Tas., includes persons with breached or suspended orders.

(g) Includes persons whose sex is unknown.

PERSONS IN FULL-TIME CUSTODY

	NSW(a)	Vic.(b)	Qld(c)	SA	WA	Tas.	NT	ACT in ACT(d)	ACT in NSW(a)	ACT Total(e)	Aust.(a)(b)(c)
AVERAGE DAILY NUMBER											
2005	9 043	3 610	5 351	1 521	3 445	526	791	66	119	185	24 353
2006	9 281	3 825	5 569	1 590	3 517	518	803	66	115	181	25 169
2007	9 576	4 144	5 571	1 776	3 774	537	856	71	101	172	26 305
2007											
Mar Qtr	9 527	4 046	5 651	1 712	3 610	516	841	63	113	176	25 968
Jun Qtr	9 623	4 132	5 684	1 770	3 759	531	898	69	94	163	26 466
Sep Qtr	9 602	4 179	5 504	1 800	3 863	541	842	76	97	174	26 407
Dec Qtr	9 550	4 216	5 446	1 822	3 859	561	843	75	101	176	26 372
2008											
Mar Qtr	9 616	4 126	5 466	1 882	3 753	530	896	90	101	191	26 359
2007											
Jan	9 430	3 997	5 624	1 658	3 566	513	824	63	126	188	25 674
Feb	9 530	4 057	5 638	1 719	3 599	514	834	66	109	175	25 956
Mar	9 622	4 086	5 691	1 761	3 666	522	864	61	104	164	26 273
Apr	9 674	4 097	5 694	1 759	3 697	524	890	61	98	158	26 395
May	9 612	4 121	5 696	1 772	3 760	528	901	66	91	157	26 456
Jun	9 585	4 178	5 663	1 778	3 821	540	902	80	92	173	26 547
Jul	9 597	4 157	5 555	1 785	3 822	539	866	72	98	170	26 394
Aug	9 623	4 164	5 503	1 799	3 836	537	829	74	96	170	26 364
Sep	9 585	4 218	5 452	1 815	3 934	548	830	84	99	182	26 465
Oct	9 513	4 248	5 457	1 809	3 906	565	808	74	98	172	26 380
Nov	9 580	4 254	5 489	1 843	3 878	569	849	81	102	183	26 543
Dec	9 557	4 147	5 393	1 815	3 794	550	872	72	102	174	26 199
2008											
Jan	9 561	4 126	5 373	1 834	3 745	528	894	77	98	175	26 138
Feb	9 601	4 108	5 473	1 904	3 730	531	906	94	106	199	26 346
Mar	9 683	4 142	5 553	1 911	3 782	533	889	100	99	198	26 592

- (a) Includes ACT prisoners held in NSW prisons. The ACT in NSW figures are a subset of the NSW figures and are not separately counted in the Australian totals – see Explanatory Notes, paragraph 17.
- (b) As of 1 July 2005, the definition of an adult changed in Vic. to a person aged 18 years and over – see Explanatory Notes, paragraph 38.
- (c) Data prior to the September quarter 2007 may be slightly overstated – see Explanatory Notes, paragraph 39.
- (d) Refers to unsentenced persons in ACT prison custody and may include some sentenced fine default only prisoners – see Explanatory Notes, paragraph 17.
- (e) ACT in ACT figures and ACT in NSW figures may not add to ACT total due to rounding.

IMPRISONMENT RATES (a)

	NSW(b)	Vic.(c)	Qld(d)	SA	WA	Tas.	NT	ACT(e)	Aust.(c)(d)
RATE PER 100,000 ADULT POPULATION									
2005	172.7	93.0	177.3	127.4	227.5	143.3	556.8	74.4	156.8
2006	175.6	98.0	180.1	132.0	227.5	139.7	552.3	72.0	160.0
2007	180.1	104.0	175.0	144.9	238.2	143.4	566.5	66.3	164.2
2007									
Mar Qtr	179.1	102.6	180.1	141.2	230.3	138.5	569.6	69.5	163.4
Jun Qtr	181.8	103.8	178.9	144.4	238.1	141.7	593.8	62.5	165.5
Sep Qtr	180.6	104.5	172.1	146.2	243.0	144.1	553.0	66.4	164.3
Dec Qtr	179.1	105.0	169.2	147.7	241.3	149.2	550.0	66.9	163.4
2008									
Mar Qtr	179.8	102.3	169.0	152.2	233.1	140.7	579.6	72.4	162.7
2007									
Jan	177.0	101.3	179.2	136.7	227.4	137.6	558.0	74.3	161.5
Feb	179.2	102.9	179.7	141.8	229.5	137.8	564.8	69.2	163.3
Mar	181.1	103.6	181.3	145.2	233.8	140.0	585.5	64.8	165.3
Apr	182.7	103.0	179.2	143.5	234.1	140.0	588.4	60.9	165.1
May	181.6	103.6	179.3	144.6	238.2	140.9	596.2	60.3	165.5
Jun	181.1	105.0	178.2	145.1	242.0	144.3	596.7	66.5	166.0
Jul	180.5	103.9	173.7	145.0	240.4	143.5	569.1	64.9	164.2
Aug	181.0	104.1	172.0	146.2	241.2	143.0	544.5	64.9	164.0
Sep	180.3	105.4	170.4	147.5	247.4	146.0	545.1	69.6	164.7
Oct	178.4	105.8	169.6	146.6	244.2	150.3	527.3	65.2	163.5
Nov	179.6	105.9	170.6	149.4	242.5	151.2	554.2	69.6	164.5
Dec	179.2	103.2	167.6	147.1	237.2	146.3	568.7	66.1	162.4
2008									
Jan	178.8	102.3	166.1	148.3	232.6	140.0	578.4	66.5	161.3
Feb	179.4	101.8	169.2	154.0	231.7	140.8	586.1	75.7	162.6
Mar	181.1	102.7	171.7	154.5	234.9	141.3	575.0	75.3	164.1

(a) Imprisonment rates from the June quarter 2007 have been calculated using preliminary ERP rebased on the 2006 Census of Population and Housing – see Explanatory Notes, paragraphs 23–24.

(b) Excludes ACT prisoners held in NSW prisons.

(c) As of 1 July 2005, the definition of an adult changed in Vic. to a person aged 18 years and over – see Explanatory Notes, paragraph 38.

(d) Data prior to the September quarter 2007 may be slightly overstated – see Explanatory Notes, paragraph 39.

(e) Includes ACT prisoners held in ACT as well as ACT prisoners held in NSW – see Explanatory Notes, paragraph 19.

PERSONS IN FULL-TIME CUSTODY, By sex

	NSW(a)	Vic. (b)	Qld(c)	SA	WA	Tas.	NT	ACT in ACT(d)	ACT in NSW(a)	ACT Total(e)	Aust. (a)(b)(c)
MALES (AVERAGE DAILY NUMBER)											
2005	8 396	3 358	4 988	1 425	3 190	495	766	63	113	176	22 679
2006	8 601	3 588	5 168	1 488	3 257	478	771	60	108	169	23 412
2007	8 867	3 894	5 151	1 658	3 459	502	817	65	96	162	24 415
2007											
Mar Qtr	8 833	3 802	5 226	1 600	3 312	482	803	58	108	167	24 117
Jun Qtr	8 910	3 879	5 245	1 652	3 437	499	857	64	91	154	24 544
Sep Qtr	8 885	3 929	5 100	1 678	3 542	507	804	71	93	163	24 513
Dec Qtr	8 839	3 965	5 037	1 700	3 543	521	806	69	94	162	24 480
2008											
Mar Qtr	8 918	3 890	5 055	1 750	3 463	496	856	79	93	172	24 506
Jan	8 875	3 893	4 982	1 706	3 446	491	852	69	90	159	24 314
Feb	8 917	3 869	5 056	1 770	3 435	498	867	84	99	182	24 497
Mar	8 962	3 906	5 127	1 775	3 505	499	849	84	90	175	24 708
FEMALES (AVERAGE DAILY NUMBER)											
2005	647	253	364	95	255	31	26	3	6	9	1 674
2006	679	237	401	102	260	40	32	6	7	12	1 757
2007	709	249	419	118	315	35	39	6	5	11	1 890
2007											
Mar Qtr	694	244	426	112	298	34	38	5	5	10	1 851
Jun Qtr	714	252	439	118	322	31	41	5	3	8	1 922
Sep Qtr	717	250	404	122	322	35	38	6	5	11	1 894
Dec Qtr	710	251	408	122	316	40	37	7	7	14	1 892
2008											
Mar Qtr	698	236	411	133	290	34	41	11	8	19	1 853
Jan	686	232	391	128	299	37	42	8	8	16	1 823
Feb	683	239	416	134	295	33	39	10	7	17	1 850
Mar	722	235	425	136	277	33	40	15	8	24	1 885
PERSONS (AVERAGE DAILY NUMBER)											
2005	9 043	3 610	5 351	1 521	3 445	526	791	66	119	185	24 353
2006	9 281	3 825	5 569	1 590	3 517	518	803	66	115	181	25 169
2007	9 576	4 144	5 571	1 776	3 774	537	856	71	101	172	26 305
2007											
Mar Qtr	9 527	4 046	5 651	1 712	3 610	516	841	63	113	176	25 968
Jun Qtr	9 623	4 132	5 684	1 770	3 759	531	898	69	94	163	26 466
Sep Qtr	9 602	4 179	5 504	1 800	3 863	541	842	76	97	174	26 407
Dec Qtr	9 550	4 216	5 446	1 822	3 859	561	843	75	101	176	26 372
2008											
Mar Qtr	9 616	4 126	5 466	1 882	3 753	530	896	90	101	191	26 359
Jan	9 561	4 126	5 373	1 834	3 745	528	894	77	98	175	26 138
Feb	9 601	4 108	5 473	1 904	3 730	531	906	94	106	199	26 346
Mar	9 683	4 142	5 553	1 911	3 782	533	889	100	99	198	26 592

(a) Includes ACT prisoners held in NSW prisons. The ACT in NSW figures are a subset of the NSW figures and are not separately counted in the Australian totals – see Explanatory Notes, paragraph 17.

(b) As of 1 July 2005, the definition of an adult changed in Vic. to a person aged 18 years and over – see Explanatory Notes, paragraph 38.

(c) Data prior to the September quarter 2007 may be slightly overstated – see Explanatory Notes, paragraph 39.

(d) Refers to unsentenced persons in ACT prison custody and may include some sentenced fine default only prisoners – see Explanatory Notes, paragraph 17.

(e) ACT in ACT figures and ACT in NSW figures may not add to ACT total due to rounding.

IMPRISONMENT RATES, By sex(a)

	NSW(b)	Vic. (c)	Qld(d)	SA	WA	Tas.	NT	ACT(e)	Aust. (c) (d)
MALES (RATE PER 100,000 ADULT POPULATION)									
2005	325.6	177.2	333.5	243.4	423.5	276.6	1 017.4	144.3	296.5
2006	330.4	188.3	336.7	251.7	422.8	264.9	996.7	136.5	301.9
2007	339.7	199.7	326.5	276.4	435.7	275.6	1 031.6	126.7	309.4
2007									
Mar Qtr	336.8	197.3	335.1	268.8	423.3	265.5	1 018.3	133.6	307.6
Jun Qtr	343.2	199.2	333.4	275.8	434.0	274.2	1 087.8	120.9	311.9
Sep Qtr	340.8	200.6	321.9	278.9	443.8	277.4	1 013.1	127.0	309.8
Dec Qtr	338.1	201.6	316.0	281.9	441.1	284.8	1 008.0	125.5	308.1
2008									
Mar Qtr	340.0	196.9	315.5	289.3	428.1	270.4	1 060.2	132.5	307.1
Jan	338.5	197.1	310.9	282.1	426.0	267.6	1 056.3	122.6	304.7
Feb	339.8	195.8	315.5	292.7	424.7	271.5	1 074.1	140.8	306.9
Mar	341.8	197.7	320.0	293.5	433.3	272.2	1 051.5	134.8	309.6
FEMALES (RATE PER 100,000 ADULT POPULATION)									
2005	24.4	12.7	23.9	15.7	33.5	16.7	38.3	7.1	21.2
2006	25.4	11.8	25.8	16.7	33.6	20.8	46.9	9.7	22.0
2007	26.3	12.3	26.1	18.9	39.8	18.2	53.6	8.0	23.2
2007									
Mar Qtr	25.9	12.1	27.0	18.2	38.0	17.7	55.2	7.4	23.0
Jun Qtr	26.6	12.4	27.4	18.8	40.9	16.3	56.1	6.2	23.7
Sep Qtr	26.6	12.3	25.0	19.4	40.6	17.9	52.4	7.9	23.2
Dec Qtr	26.2	12.2	25.1	19.3	39.7	20.8	51.0	10.3	23.1
2008									
Mar Qtr	25.6	11.4	25.2	21.0	36.2	17.8	54.9	14.2	22.5
Jan	25.1	11.3	23.9	20.3	37.4	19.0	56.5	12.2	22.2
Feb	25.1	11.6	25.5	21.2	36.8	16.9	53.3	12.6	22.5
Mar	26.4	11.4	26.1	21.5	34.6	17.2	54.7	17.7	22.9
PERSONS (RATE PER 100,000 ADULT POPULATION)									
2005	172.7	93.0	177.3	127.4	227.5	143.3	556.8	74.4	156.8
2006	175.6	98.0	180.1	132.0	227.5	139.7	552.3	72.0	160.0
2007	180.1	104.0	175.0	144.9	238.2	143.4	566.5	66.3	164.2
2007									
Mar Qtr	179.1	102.6	180.1	141.2	230.3	138.5	569.6	69.5	163.4
Jun Qtr	181.8	103.8	178.9	144.4	238.1	141.7	593.8	62.5	165.5
Sep Qtr	180.6	104.5	172.1	146.2	243.0	144.1	553.0	66.4	164.3
Dec Qtr	179.1	105.0	169.2	147.7	241.3	149.2	550.0	66.9	163.4
2008									
Mar Qtr	179.8	102.3	169.0	152.2	233.1	140.7	579.6	72.4	162.7
Jan	178.8	102.3	166.1	148.3	232.6	140.0	578.4	66.5	161.3
Feb	179.4	101.8	169.2	154.0	231.7	140.8	586.1	75.7	162.6
Mar	181.1	102.7	171.7	154.5	234.9	141.3	575.0	75.3	164.1

(a) Imprisonment rates from the June quarter 2007 have been calculated using preliminary ERP rebased on the 2006 Census of Population and Housing – see Explanatory Notes, paragraphs 23–24.

(b) Excludes ACT prisoners held in NSW prisons.

(c) As of 1 July 2005, the definition of an adult changed in Vic. to a person aged 18 years and over – see Explanatory Notes, paragraph 38.

(d) Data prior to the September quarter 2007 may be slightly overstated – see Explanatory Notes, paragraph 39.

(e) Includes ACT prisoners held in ACT as well as ACT prisoners held in NSW – see Explanatory Notes, paragraph 19.

INDIGENOUS PERSONS IN FULL-TIME CUSTODY, By sex(a)

	NSW(b)	Vic. (c)	Qld(d)	SA	WA	Tas.	NT	ACT in ACT(e)	ACT in NSW(b)	ACT Total(f)	Aust. (b) (c) (d)
MALES (AVERAGE DAILY NUMBER)											
2005	1 578	177	1 236	259	1 257	61	609	8	4	12	5 185
2006	1 716	202	1 379	281	1 274	53	637	8	9	17	5 548
2007	1 771	214	1 355	349	1 420	59	671	8	11	19	5 847
2007											
Mar Qtr	1 768	207	1 409	318	1 348	57	657	7	15	22	5 771
Jun Qtr	1 775	209	1 397	347	1 416	54	705	10	9	19	5 913
Sep Qtr	1 772	223	1 309	368	1 472	62	666	8	9	17	5 880
Dec Qtr	1 768	216	1 307	363	1 442	60	657	7	11	18	5 820
2008											
Mar Qtr	1 817	219	1 352	381	1 398	57	704	10	9	19	5 938
Jan	1 800	219	1 312	365	1 390	56	697	8	10	18	5 847
Feb	1 815	219	1 361	382	1 390	58	715	10	9	19	5 950
Mar	1 834	219	1 385	397	1 413	58	701	12	7	19	6 019
FEMALES (AVERAGE DAILY NUMBER)											
2005	182	17	98	24	131	6	20	—	—	—	479
2006	194	13	114	24	134	8	23	1	—	1	512
2007	209	15	115	29	175	7	32	1	—	1	584
2007											
Mar Qtr	194	15	123	29	163	7	30	—	—	—	562
Jun Qtr	209	17	129	29	183	7	33	1	—	1	608
Sep Qtr	221	15	107	31	178	7	33	1	—	1	593
Dec Qtr	213	13	102	28	174	8	31	2	—	2	571
2008											
Mar Qtr	212	16	114	30	153	8	33	3	1	4	569
Jan	210	15	105	30	159	11	34	3	1	3	566
Feb	206	17	120	30	155	8	32	3	1	4	572
Mar	219	15	117	31	145	6	32	4	1	5	569
PERSONS (AVERAGE DAILY NUMBER)											
2005	1 761	194	1 334	284	1 388	67	629	8	4	12	5 664
2006	1 910	215	1 492	305	1 408	61	660	9	9	18	6 060
2007	1 980	229	1 471	378	1 594	66	703	9	11	20	6 430
2007											
Mar Qtr	1 961	222	1 532	347	1 511	65	688	8	15	22	6 333
Jun Qtr	1 984	226	1 526	376	1 599	61	738	11	9	20	6 521
Sep Qtr	1 993	238	1 417	399	1 650	69	699	8	9	18	6 473
Dec Qtr	1 982	229	1 409	390	1 616	68	688	9	11	20	6 391
2008											
Mar Qtr	2 028	235	1 466	412	1 551	66	737	13	10	23	6 507
Jan	2 011	234	1 417	395	1 550	67	730	10	11	21	6 413
Feb	2 021	237	1 481	412	1 545	66	747	13	10	23	6 522
Mar	2 053	234	1 502	428	1 558	65	733	16	8	24	6 589

— nil or rounded to zero (including null cells)

(a) Excludes persons whose Indigenous status is unknown – see Explanatory Notes, paragraph 33.

(b) Includes ACT prisoners held in NSW prisons. The ACT in NSW figures are a subset of the NSW figures and are not separately counted in the Australian totals – see Explanatory Notes, paragraph 17.

(c) As of 1 July 2005, the definition of an adult changed in Vic. to a person aged 18 years and over – see Explanatory Notes, paragraph 38.

(d) Data prior to the September quarter 2007 may be slightly overstated – see Explanatory Notes, paragraph 39.

(e) Refers to unsentenced persons in ACT prison custody and may include some sentenced fine default only prisoners – see Explanatory Notes, paragraph 17.

(f) ACT in ACT figures and ACT in NSW figures may not add to ACT total due to rounding.

INDIGENOUS IMPRISONMENT RATES, By sex(a)(b)

	NSW(c)	Vic. (d)	Qld(e)	SA	WA	Tas.	NT	ACT(f)	Aust.(d)(e)
MALES (RATE PER 100,000 ADULT INDIGENOUS POPULATION)									
2005	4 074.1	2 033.0	3 331.5	3 408.0	6 478.5	1 232.2	3 490.8	1 000.8	3 839.3
2006	4 318.0	2 288.5	3 604.8	3 591.2	6 382.1	1 038.6	3 577.3	1 366.7	4 006.0
2007	4 344.4	2 350.2	3 437.0	4 358.6	6 925.4	1 124.6	3 694.1	1 483.6	4 111.4
2007									
Mar Qtr	4 327.9	2 271.4	3 573.9	3 968.5	6 573.7	1 101.9	3 616.8	1 719.2	4 058.3
Jun Qtr	4 359.1	2 300.0	3 543.1	4 333.3	6 905.8	1 043.1	3 881.2	1 486.3	4 158.5
Sep Qtr	4 351.8	2 454.7	3 320.1	4 595.7	7 180.7	1 193.5	3 664.7	1 318.9	4 135.2
Dec Qtr	4 338.7	2 372.5	3 315.2	4 528.1	7 033.5	1 158.5	3 613.9	1 415.1	4 092.9
2008									
Mar Qtr	4 353.6	2 326.9	3 319.6	4 646.2	6 644.3	1 072.1	3 796.0	1 434.9	4 064.0
Jan	4 312.1	2 323.2	3 220.4	4 447.4	6 607.8	1 044.7	3 757.1	1 349.4	4 001.2
Feb	4 348.2	2 331.1	3 341.4	4 654.6	6 605.9	1 083.7	3 854.9	1 479.4	4 072.0
Mar	4 399.9	2 326.6	3 399.2	4 837.3	6 715.3	1 089.1	3 781.8	1 480.1	4 119.5
FEMALES (RATE PER 100,000 ADULT INDIGENOUS POPULATION)									
2005	447.4	190.0	239.5	299.3	631.7	115.1	107.2	14.1	332.0
2006	463.9	145.0	270.8	291.3	628.1	149.4	124.9	78.3	346.2
2007	488.2	158.1	267.7	336.1	793.4	138.5	167.3	68.6	384.5
2007									
Mar Qtr	451.5	158.4	285.9	335.5	741.9	136.6	159.5	21.4	370.4
Jun Qtr	488.1	176.9	300.2	335.1	831.3	132.0	172.3	57.3	400.6
Sep Qtr	514.7	160.3	249.2	354.1	808.4	134.8	173.0	58.9	390.6
Dec Qtr	497.6	136.9	236.2	319.8	791.2	150.6	164.4	135.6	376.3
2008									
Mar Qtr	480.5	162.3	257.2	341.1	677.7	153.6	168.3	303.8	365.9
Jan	476.6	155.0	237.1	337.2	704.8	195.4	173.5	249.3	364.0
Feb	467.1	179.2	271.4	337.2	687.0	150.6	166.8	283.7	367.9
Mar	496.6	154.4	264.3	348.5	642.1	114.4	164.5	376.5	366.0
PERSONS (RATE PER 100,000 ADULT INDIGENOUS POPULATION)									
2005	2 211.8	1 097.2	1 710.0	1 798.4	3 452.9	662.6	1 760.5	502.4	2 027.7
2006	2 336.5	1 202.2	1 860.2	1 881.1	3 404.6	586.0	1 810.6	715.1	2 116.2
2007	2 361.1	1 238.5	1 781.5	2 269.4	3 750.4	623.2	1 891.0	767.6	2 187.5
2007									
Mar Qtr	2 334.2	1 199.8	1 856.4	2 081.6	3 554.2	611.1	1 849.3	860.1	2 154.5
Jun Qtr	2 368.2	1 223.3	1 849.2	2 256.7	3 760.6	579.8	1 985.0	763.3	2 218.5
Sep Qtr	2 378.3	1 291.2	1 716.0	2 392.6	3 881.3	655.2	1 879.6	681.4	2 202.1
Dec Qtr	2 363.1	1 238.8	1 706.9	2 342.4	3 801.4	646.0	1 850.3	767.6	2 174.3
2008									
Mar Qtr	2 362.8	1 229.5	1 725.3	2 406.9	3 554.3	606.7	1 943.4	863.3	2 157.4
Jan	2 340.6	1 224.1	1 667.3	2 309.5	3 550.8	614.3	1 927.0	793.5	2 126.0
Feb	2 353.2	1 240.2	1 743.1	2 408.9	3 540.6	610.9	1 971.4	875.2	2 162.3
Mar	2 393.6	1 225.4	1 767.2	2 502.5	3 570.1	595.3	1 934.4	922.5	2 184.3

(a) The rates calculation uses the Indigenous population projection for 30 June of that calendar year as the denominator – see Explanatory Notes, paragraphs 25–27.

(b) Excludes persons whose Indigenous status is unknown – see Explanatory Notes, paragraph 33.

(c) Excludes ACT prisoners held in NSW prisons.

(d) As of 1 July 2005, the definition of an adult changed in Vic. to a person aged 18 years and over – see Explanatory Notes, paragraph 38.

(e) Data prior to the September quarter 2007 may be slightly overstated – see Explanatory Notes, paragraph 39.

(f) Includes ACT prisoners held in ACT as well as ACT prisoners held in NSW – see Explanatory Notes, paragraph 19.

PERSONS IN FULL-TIME CUSTODY, By type of custody

	NSW(a) (b)	Vic. (c)	Qld(d)	SA	WA	Tas.	NT	ACT in ACT(e)	ACT in NSW(a)	ACT Total(f)	Aust. (g)
PERSONS IN SECURE CUSTODY (AVERAGE DAILY NUMBER)											
2005	5 207	3 225	4 500	1 348	2 489	442	622	66	29	95	17 901
2006	5 736	3 443	4 766	1 413	2 608	444	616	66	33	99	19 093
2007	5 893	3 743	4 853	1 581	2 771	477	621	71	26	97	20 010
2007											
Mar Qtr	5 931	3 671	4 882	1 520	2 709	458	614	63	34	97	19 850
Jun Qtr	5 918	3 733	4 918	1 577	2 786	470	643	69	23	92	20 114
Sep Qtr	5 855	3 771	4 815	1 605	2 831	480	613	76	22	99	20 045
Dec Qtr	5 867	3 795	4 799	1 622	2 756	499	614	75	27	102	20 027
2008											
Mar Qtr	5 942	3 693	4 895	1 684	2 735	468	641	90	26	116	20 147
Jan	5 806	3 694	4 797	1 639	2 718	464	645	77	26	103	19 841
Feb	5 858	3 679	4 908	1 703	2 714	468	646	94	27	121	20 070
Mar	6 153	3 706	4 981	1 711	2 771	471	632	100	24	124	20 524
PERSONS IN OPEN CUSTODY (AVERAGE DAILY NUMBER)											
2005	3 835	385	851	172	956	84	169	..	89	89	6 452
2006	3 545	381	803	177	909	74	187	..	82	82	6 076
2007	3 683	401	717	195	1 003	61	235	..	75	75	6 295
2007											
Mar Qtr	3 596	375	769	192	901	58	227	..	79	79	6 118
Jun Qtr	3 705	399	766	193	973	61	255	..	71	71	6 352
Sep Qtr	3 747	409	689	195	1 032	61	229	..	75	75	6 362
Dec Qtr	3 683	421	647	200	1 103	62	229	..	74	74	6 346
2008											
Mar Qtr	3 674	432	571	199	1 018	63	255	..	75	75	6 212
Jan	3 755	431	576	195	1 027	64	249	..	72	72	6 297
Feb	3 743	429	565	201	1 016	63	260	..	79	79	6 276
Mar	3 531	436	572	200	1 011	62	257	..	74	74	6 068
PERSONS IN CUSTODY (AVERAGE DAILY NUMBER)											
2005	9 043	3 610	5 351	1 521	3 445	526	791	66	119	185	24 353
2006	9 281	3 825	5 569	1 590	3 517	518	803	66	115	181	25 169
2007	9 576	4 144	5 571	1 776	3 774	537	856	71	101	172	26 305
2007											
Mar Qtr	9 527	4 046	5 651	1 712	3 610	516	841	63	113	176	25 968
Jun Qtr	9 623	4 132	5 684	1 770	3 759	531	898	69	94	163	26 466
Sep Qtr	9 602	4 179	5 504	1 800	3 863	541	842	76	97	174	26 407
Dec Qtr	9 550	4 216	5 446	1 822	3 859	561	843	75	101	176	26 372
2008											
Mar Qtr	9 616	4 126	5 466	1 882	3 753	530	896	90	101	191	26 359
Jan	9 561	4 126	5 373	1 834	3 745	528	894	77	98	175	26 138
Feb	9 601	4 108	5 473	1 904	3 730	531	906	94	106	199	26 346
Mar	9 683	4 142	5 553	1 911	3 782	533	889	100	99	198	26 592

.. not applicable

- (a) Includes ACT prisoners held in NSW prisons. The ACT in NSW figures are a subset of the NSW figures and are not separately counted in the Australian totals – see Explanatory Notes, paragraph 17.
- (b) The classification of some NSW correctional facilities changed from March 2008 and July 2005 – see Explanatory Notes, paragraphs 34–35.
- (c) As of 1 July 2005, the definition of an adult changed in Vic. to a person aged 18 years and over – see Explanatory Notes, paragraph 38.
- (d) Data prior to the September quarter 2007 may be slightly overstated – see Explanatory Notes, paragraph 39.
- (e) Refers to unsentenced persons in ACT prison custody and may include some sentenced fine default only prisoners – see Explanatory Notes, paragraph 17.
- (f) ACT in ACT figures and ACT in NSW figures may not add to ACT total due to rounding.
- (g) See footnotes a, b, c and d.

IMPRISONMENT RATES, By type of custody(a)

	NSW(b)(c)	Vic.(d)	Qld(e)	SA	WA	Tas.	NT	ACT(f)	Aust.(c)(d)(e)	
PERSONS IN SECURE CUSTODY (RATE PER 100,000 ADULT POPULATION)										
2005	100.2	83.1	149.1	113.0	164.4	120.5	437.7	38.4	115.3	
2006	109.3	88.2	154.1	117.3	168.7	119.9	423.8	39.5	121.4	
2007	111.5	93.9	152.5	129.0	174.9	127.3	410.9	37.5	124.9	
2007										
Mar Qtr	112.2	93.1	155.6	125.4	172.8	122.9	416.1	38.3	124.9	
Jun Qtr	112.5	93.8	154.8	128.7	176.5	125.5	425.1	35.2	125.8	
Sep Qtr	110.8	94.3	150.5	130.4	178.0	127.8	402.5	37.7	124.7	
Dec Qtr	110.7	94.5	149.1	131.5	172.3	132.7	400.4	38.9	124.1	
2008										
Mar Qtr	111.8	91.6	151.3	136.1	169.9	124.1	414.5	44.0	124.3	
Jan	109.2	91.6	148.3	132.5	168.8	123.2	417.1	39.2	122.4	
Feb	110.2	91.2	151.7	137.7	168.6	124.2	417.9	45.9	123.9	
Mar	115.8	91.9	154.0	138.3	172.1	124.9	409.0	47.0	126.7	
PERSONS IN OPEN CUSTODY (RATE PER 100,000 ADULT POPULATION)										
2005	72.5	9.9	28.2	14.4	63.1	22.8	119.1	36.0	41.5	
2006	66.3	9.8	26.0	14.7	58.8	19.9	128.5	32.5	38.6	
2007	68.6	10.1	22.5	15.9	63.3	16.2	155.6	28.8	39.3	
2007										
Mar Qtr	66.9	9.5	24.5	15.8	57.5	15.6	153.5	31.2	38.5	
Jun Qtr	69.3	10.0	24.1	15.7	61.6	16.2	168.7	27.3	39.7	
Sep Qtr	69.8	10.2	21.5	15.8	64.9	16.4	150.5	28.8	39.6	
Dec Qtr	68.4	10.5	20.1	16.2	69.0	16.6	149.7	28.1	39.3	
2008										
Mar Qtr	68.0	10.7	17.6	16.1	63.2	16.6	165.1	28.4	38.3	
Jan	69.6	10.7	17.8	15.8	63.8	16.9	161.3	27.4	38.9	
Feb	69.2	10.6	17.5	16.3	63.1	16.6	168.3	29.8	38.7	
Mar	65.3	10.8	17.7	16.2	62.8	16.4	166.1	28.3	37.4	
PERSONS IN CUSTODY (RATE PER 100,000 ADULT POPULATION)										
2005	172.7	93.0	177.3	127.4	227.5	143.3	556.8	74.4	156.8	
2006	175.6	98.0	180.1	132.0	227.5	139.7	552.3	72.0	160.0	
2007	180.1	104.0	175.0	144.9	238.2	143.4	566.5	66.3	164.2	
2007										
Mar Qtr	179.1	102.6	180.1	141.2	230.3	138.5	569.6	69.5	163.4	
Jun Qtr	181.8	103.8	178.9	144.4	238.1	141.7	593.8	62.5	165.5	
Sep Qtr	180.6	104.5	172.1	146.2	243.0	144.1	553.0	66.4	164.3	
Dec Qtr	179.1	105.0	169.2	147.7	241.3	149.2	550.0	66.9	163.4	
2008										
Mar Qtr	179.8	102.3	169.0	152.2	233.1	140.7	579.6	72.4	162.7	
Jan	178.8	102.3	166.1	148.3	232.6	140.0	578.4	66.5	161.3	
Feb	179.4	101.8	169.2	154.0	231.7	140.8	586.1	75.7	162.6	
Mar	181.1	102.7	171.7	154.5	234.9	141.3	575.0	75.3	164.1	
(a)	Imprisonment rates from the June quarter 2007 have been calculated using preliminary ERP rebased on the 2006 Census of Population and Housing – see Explanatory Notes, paragraphs 23–24.				(d) As of 1 July 2005, the definition of an adult changed in Vic. to a person aged 18 years and over – see Explanatory Notes, paragraph 38.					
(b)	Excludes ACT prisoners held in NSW prisons.				(e) Data prior to the September quarter 2007 may be slightly overstated – see Explanatory Notes, paragraph 39.					
(c)	The classification of some NSW correctional facilities changed from March 2008 and July 2005 – see Explanatory Notes, paragraphs 34–35.				(f) Includes ACT prisoners held in ACT as well as ACT prisoners held in NSW – see Explanatory Notes, paragraph 19.					

PERSONS IN FULL-TIME CUSTODY, By legal status(a)

	NSW(b)	Vic. (c)	Qld(d)	SA	WA	Tas.	NT	ACT in ACT(e)	ACT in NSW(b)	ACT Total(f)	Aust. (b) (c) (d)
UNSENTENCED (NUMBER ON FIRST DAY OF MONTH)											
2005	2 096	651	1 078	521	553	119	144	67	—	67	5 229
2006	2 221	700	1 176	548	603	120	164	65	—	65	5 597
2007	2 400	785	1 251	619	682	115	170	67	—	67	6 089
2007											
Mar Qtr	2 371	747	1 241	599	670	111	168	64	—	64	5 971
Jun Qtr	2 382	781	1 294	635	681	122	188	64	—	64	6 147
Sep Qtr	2 378	813	1 272	631	700	116	158	67	—	67	6 135
Dec Qtr	2 470	801	1 195	612	676	111	166	73	—	73	6 105
2008											
Mar Qtr	2 554	794	1 260	649	723	114	210	82	—	82	6 386
SENTENCED (NUMBER ON FIRST DAY OF MONTH)											
2005	6 933	2 963	4 255	1 016	2 890	409	647	1	120	121	19 112
2006	7 049	3 105	4 367	1 048	2 906	398	637	1	115	116	19 509
2007	7 170	3 351	4 312	1 161	3 073	419	687	1	101	101	20 174
2007											
Mar Qtr	7 127	3 271	4 374	1 100	2 901	394	663	—	109	109	19 830
Jun Qtr	7 247	3 336	4 391	1 147	3 036	407	714	1	96	97	20 280
Sep Qtr	7 217	3 359	4 239	1 176	3 140	418	699	1	97	98	20 249
Dec Qtr	7 089	3 439	4 245	1 222	3 214	455	673	—	101	102	20 338
2008											
Mar Qtr	7 050	3 316	4 159	1 235	3 026	405	691	1	101	102	19 882
TOTAL (NUMBER ON FIRST DAY OF MONTH)											
2005	9 029	3 614	5 333	1 537	3 442	528	791	68	120	188	24 341
2006	9 269	3 805	5 543	1 595	3 509	518	801	65	115	180	25 106
2007	9 570	4 137	5 563	1 781	3 755	534	857	68	101	168	26 264
2007											
Mar Qtr	9 498	4 018	5 615	1 699	3 571	505	831	64	109	173	25 801
Jun Qtr	9 629	4 117	5 685	1 782	3 717	530	902	65	96	161	26 426
Sep Qtr	9 594	4 172	5 511	1 807	3 840	534	857	68	97	165	26 384
Dec Qtr	9 559	4 240	5 441	1 833	3 890	567	839	73	101	175	26 442
2008											
Mar Qtr	9 604	4 110	5 419	1 884	3 749	518	900	84	101	185	26 268
Jan	9 566	4 093	5 326	1 824	3 747	527	883	67	102	169	26 033
Feb	9 599	4 107	5 419	1 909	3 730	508	916	81	103	184	26 269
Mar	9 648	4 131	5 511	1 918	3 769	520	902	103	98	201	26 502

— nil or rounded to zero (including null cells)

- (a) Figures for the quarter and year for first day of month counts are calculated as a simple average – see Explanatory Notes, paragraph 5.
- (b) Includes ACT prisoners held in NSW prisons. The ACT in NSW figures are a subset of the NSW figures and are not separately counted in the Australian totals – see Explanatory Notes, paragraph 17.
- (c) As of 1 July 2005, the definition of an adult changed in Vic. to a person aged 18 years and over – see Explanatory Notes, paragraph 38.

- (d) Data prior to the September quarter 2007 may be slightly overstated – see Explanatory Notes, paragraph 39.
- (e) Refers to unsentenced persons in ACT prison custody and may include some sentenced fine default only prisoners – see Explanatory Notes, paragraph 17.
- (f) ACT in ACT figures and ACT in NSW figures may not add to ACT total due to rounding.

IMPRISONMENT RATES, By legal status(a)

	NSW(b)	Vic.(c)	Qld(d)	SA	WA	Tas.	NT	ACT(e)	Aust.(c)(d)
UNSENTENCED (RATE PER 100,000 ADULT POPULATION)									
2005	40.6	16.8	35.7	43.7	36.5	32.5	101.3	26.9	33.7
2006	42.5	17.9	38.0	45.5	39.0	32.4	112.8	25.7	35.6
2007	45.6	19.7	39.3	50.5	43.0	30.7	112.7	25.8	38.0
2006									
Dec Qtr	43.7	19.5	39.1	45.8	40.6	32.6	124.0	25.4	36.8
2007									
Mar Qtr	45.1	18.9	39.6	49.4	42.7	29.7	114.0	25.1	37.6
Jun Qtr	45.4	19.6	40.7	51.8	43.1	32.7	124.6	24.6	38.4
Sep Qtr	45.2	20.3	39.8	51.3	44.0	30.9	103.8	25.6	38.2
Dec Qtr	46.8	19.9	37.1	49.6	42.3	29.6	108.5	27.8	37.8
SENTENCED (RATE PER 100,000 ADULT POPULATION)									
2005	131.9	76.3	140.9	85.1	190.8	111.4	455.1	48.7	123.1
2006	132.8	79.5	141.2	87.0	188.0	107.5	438.0	45.9	124.0
2007	134.4	84.1	135.5	94.7	194.0	111.8	454.8	39.1	125.9
2006									
Dec Qtr	134.0	83.6	141.5	91.7	189.7	116.5	427.1	45.2	126.1
2007									
Mar Qtr	133.5	82.9	139.4	90.7	185.0	105.8	448.8	43.1	124.8
Jun Qtr	136.4	83.9	138.2	93.6	192.3	108.8	472.0	37.2	126.8
Sep Qtr	135.3	84.0	132.5	95.6	197.5	111.3	459.4	37.5	126.0
Dec Qtr	132.4	85.6	131.9	99.0	200.9	121.1	438.8	38.7	126.0
TOTAL (RATE PER 100,000 ADULT POPULATION)									
2005	172.4	93.1	176.7	128.8	227.3	143.9	556.4	75.6	156.7
2006	175.4	97.5	179.3	132.4	227.0	139.9	550.8	71.6	159.6
2007	180.0	103.8	174.8	145.3	237.0	142.5	567.4	64.9	163.9
2006									
Dec Qtr	177.7	103.1	180.7	137.4	230.3	149.1	551.0	70.6	163.0
2007									
Mar Qtr	178.6	101.9	178.9	140.1	227.8	135.5	562.8	68.2	162.3
Jun Qtr	181.9	103.5	178.9	145.4	235.4	141.4	596.6	61.8	165.3
Sep Qtr	180.5	104.3	172.3	146.9	241.5	142.2	563.2	63.1	164.2
Dec Qtr	179.3	105.6	169.1	148.6	243.2	150.7	547.4	66.4	163.9
Oct	179.7	105.3	168.4	146.3	247.0	148.7	529.1	65.0	163.8
Nov	178.7	106.2	169.6	150.5	242.9	151.6	537.6	66.9	164.0
Dec	179.4	105.1	169.3	149.0	239.7	151.9	575.4	67.3	163.8

(a) Imprisonment rates from the June quarter 2007 have been calculated using preliminary ERP rebased on the 2006 Census of Population and Housing – see Explanatory Notes, paragraphs 23–24.

(b) Excludes ACT prisoners held in NSW prisons.

(c) As of 1 July 2005, the definition of an adult changed in Vic. to a person aged 18 years and over – see Explanatory Notes, paragraph 38.

(d) Data prior to the September quarter 2007 may be slightly overstated – see Explanatory Notes, paragraph 39.

(e) Includes ACT prisoners held in ACT as well as ACT prisoners held in NSW – see Explanatory Notes, paragraph 19.

	NSW(c)	Vic. (d)	Qld(e)	SA	WA	Tas.	NT	ACT in ACT(f)	ACT in NSW(c)	ACT Total(g)	Aust. (c) (d) (e)
UNSENTENCED (NUMBER ON FIRST DAY OF MONTH)											
2005	392	44	249	118	210	18	105	8	—	8	1 144
2006	441	48	285	116	241	19	140	10	—	10	1 300
2007	451	52	331	160	278	14	143	9	—	9	1 437
2007											
Mar Qtr	447	52	330	146	273	17	140	6	—	6	1 412
Jun Qtr	450	51	343	161	282	13	151	12	—	12	1 462
Sep Qtr	448	58	347	174	293	15	136	8	—	8	1 479
Dec Qtr	457	47	306	159	263	12	143	8	—	8	1 395
2008											
Mar Qtr	515	51	353	173	297	14	176	12	—	12	1 591
SENTENCED (NUMBER ON FIRST DAY OF MONTH)											
2005	1 372	150	1 086	172	1 181	50	522	—	4	4	4 533
2006	1 473	166	1 206	193	1 162	42	518	—	10	10	4 761
2007	1 520	176	1 135	217	1 311	53	564	—	10	10	4 975
2007											
Mar Qtr	1 509	170	1 190	192	1 219	49	541	—	13	13	4 870
Jun Qtr	1 526	170	1 190	213	1 296	50	587	—	9	9	5 032
Sep Qtr	1 536	180	1 070	228	1 356	53	577	—	10	10	5 000
Dec Qtr	1 509	184	1 089	234	1 374	58	549	—	10	10	4 997
2008											
Mar Qtr	1 489	185	1 097	237	1 257	51	563	—	10	10	4 879
TOTAL (NUMBER ON FIRST DAY OF MONTH)											
2005	1 764	194	1 335	289	1 391	69	627	8	4	12	5 677
2006	1 913	214	1 492	309	1 404	61	659	10	10	19	6 061
2007	1 971	228	1 466	377	1 589	67	706	9	10	19	6 412
2007											
Mar Qtr	1 956	222	1 520	338	1 492	66	682	6	13	19	6 282
Jun Qtr	1 977	221	1 533	374	1 578	63	738	12	9	21	6 495
Sep Qtr	1 984	238	1 417	402	1 649	68	713	8	10	18	6 479
Dec Qtr	1 966	231	1 395	394	1 637	70	692	8	10	18	6 392
2008											
Mar Qtr	2 004	235	1 451	410	1 554	65	739	12	10	22	6 470

— nil or rounded to zero (including null cells)

- (a) Figures for the quarter and year for first day of the month counts are calculated as a simple average – see Explanatory Notes, paragraph 5.
- (b) Excludes persons whose Indigenous status is unknown – see Explanatory Notes, paragraph 33.
- (c) Includes ACT prisoners held in NSW prisons. The ACT in NSW figures are a subset of the NSW figures and are not separately counted in the Australian totals – see Explanatory Notes, paragraph 17.

- (d) As of 1 July 2005, the definition of an adult changed in Vic. to a person aged 18 years and over – see Explanatory Notes, paragraph 38.
- (e) Data prior to the September quarter 2007 may be slightly overstated – see Explanatory Notes, paragraph 39.
- (f) Refers to unsentenced persons in ACT prison custody and may include some sentenced fine default only prisoners – see Explanatory Notes, paragraph 17.
- (g) ACT in ACT figures and ACT in NSW figures may not add to ACT total due to rounding.

INDIGENOUS IMPRISONMENT RATES, By legal status(a)(b)(c)

	NSW(d)	Vic. (e)	Qld(f)	SA	WA	Tas.	NT	ACT(g)	Aust. (e)(f)
UNSENTENCED (RATE PER 100,000 ADULT INDIGENOUS POPULATION)									
2005	494.0	250.9	319.1	745.2	522.0	179.5	294.2	329.5	409.6
2006	541.4	267.6	355.5	714.2	583.6	184.2	384.3	376.8	453.8
2007	540.3	281.1	401.5	960.8	653.0	133.0	383.2	335.8	488.8
2007									
Mar Qtr	536.3	283.3	399.4	878.2	641.4	160.5	377.4	232.5	480.2
Jun Qtr	539.9	274.3	415.5	964.3	663.4	119.6	405.2	477.9	497.5
Sep Qtr	537.5	314.0	420.4	1 044.3	688.5	138.5	365.8	310.0	503.0
Dec Qtr	547.5	252.6	370.7	956.3	618.7	113.3	384.6	322.9	474.6
2008									
Mar Qtr	602.4	265.4	415.8	1 013.5	679.8	132.1	464.4	453.9	527.4
SENTENCED (RATE PER 100,000 ADULT INDIGENOUS POPULATION)									
2005	1 721.9	848.5	1 392.6	1 088.7	2 938.3	498.2	1 461.9	159.7	1 622.8
2006	1 798.8	929.3	1 503.6	1 191.0	2 810.5	403.8	1 421.4	380.1	1 662.5
2007	1 810.2	952.4	1 374.7	1 300.9	3 084.6	497.4	1 515.7	400.4	1 692.5
2007									
Mar Qtr	1 793.2	920.4	1 441.6	1 150.3	2 868.4	462.7	1 455.9	516.6	1 656.9
Jun Qtr	1 819.5	920.4	1 441.2	1 280.4	3 048.8	472.2	1 578.7	335.8	1 712.0
Sep Qtr	1 829.9	972.7	1 296.7	1 366.4	3 189.9	503.7	1 552.7	374.5	1 701.1
Dec Qtr	1 798.0	996.2	1 319.3	1 406.4	3 231.5	550.9	1 475.6	374.5	1 700.1
2008									
Mar Qtr	1 731.8	967.2	1 291.4	1 383.8	2 880.3	470.1	1 484.6	365.6	1 617.4
TOTAL (RATE PER 100,000 ADULT INDIGENOUS POPULATION)									
2005	2 215.9	1 099.4	1 711.7	1 833.9	3 460.3	677.8	1 756.1	489.2	2 032.4
2006	2 340.2	1 196.9	1 859.1	1 905.2	3 394.1	588.0	1 805.8	757.0	2 116.2
2007	2 350.5	1 233.5	1 776.2	2 261.6	3 737.6	630.4	1 898.9	736.1	2 181.3
2007									
Mar Qtr	2 329.5	1 203.7	1 841.0	2 028.6	3 509.8	623.3	1 833.3	749.1	2 137.1
Jun Qtr	2 359.5	1 194.7	1 856.7	2 244.6	3 712.2	591.8	1 983.9	813.6	2 209.4
Sep Qtr	2 367.5	1 286.7	1 717.0	2 410.7	3 878.4	642.2	1 918.4	684.5	2 204.1
Dec Qtr	2 345.5	1 248.8	1 690.0	2 362.7	3 850.2	664.2	1 860.2	697.4	2 174.6
2008									
Mar Qtr	2 334.2	1 232.6	1 707.2	2 397.2	3 560.1	602.2	1 949.0	819.5	2 144.8

(a) The rates calculation uses the Indigenous population projection for 30 June of that calendar year as the denominator – see Explanatory Notes, paragraphs 25–27.

(b) Figures for the quarter and year for first day of the month counts are calculated as a simple average – see Explanatory Notes, paragraph 5.

(c) Excludes persons whose Indigenous status is unknown – see Explanatory Notes, paragraph 33.

(d) Excludes ACT prisoners in NSW prisons.

(e) As of 1 July 2005, the definition of an adult changed in Vic. to a person aged 18 years and over – see Explanatory Notes, paragraph 38.

(f) Data prior to the September quarter 2007 may be slightly overstated – see Explanatory Notes, paragraph 39.

(g) Includes ACT prisoners held in ACT as well as ACT prisoners held in NSW – see Explanatory Notes, paragraph 19.

SENTENCED PRISONER RECEPTIONS INTO FULL-TIME CUSTODY(a)

	NSW(b)	Vic. (c)	Qld	SA	WA	Tas.	NT	ACT in ACT	ACT in NSW(b)	ACT Total	Aust. (b) (c)
NUMBER											
2005	7 143	3 630	5 654	1 068	3 799	771	1 249	39	142	181	23 353
2006	8 056	3 863	6 045	1 210	3 331	836	1 350	53	128	181	24 744
2007	8 625	3 914	7 027	1 457	3 805	753	1 394	30	128	158	27 005
2007											
Mar Qtr	2 126	957	1 637	308	850	176	341	8	19	27	6 403
Jun Qtr	2 183	990	1 702	352	875	195	392	12	27	39	6 701
Sep Qtr	2 066	1 007	1 786	404	1 103	203	302	5	36	41	6 876
Dec Qtr	2 250	960	1 902	393	977	179	359	5	46	51	7 025
2008											
Mar Qtr	2 143	841	2 008	378	957	172	374	12	40	52	6 885

- (a) The count of sentenced prisoner receptions on the first day of each month of the reference quarter and year are totalled – see Explanatory Notes, paragraph 5.
- (b) Includes ACT prisoners held in NSW prisons. The ACT in NSW figures are a subset of the NSW figures and are not separately counted in the Australian totals – see Explanatory Notes, paragraph 17.
- (c) As of 1 July 2005, the definition of an adult changed in Vic. to a person aged 18 years and over – see Explanatory Notes, paragraph 38.

	NSW		ACT(c)	
	no.(d)	rate(e)	no.(d)	rate(e)
MALES				
2005	762	30.0	76	62.6
2006	684	26.6	52	42.2
2007	685	26.5	54	42.7
2007				
Mar Qtr	663	25.6	48	38.9
Jun Qtr	691	26.9	60	47.0
Sep Qtr	682	26.4	60	47.0
Dec Qtr	704	27.2	49	37.8
2008				
Mar Qtr	623	24.0	39	30.2
Jan	654	25.2	37	28.6
Feb	609	23.4	36	28.1
Mar	605	23.3	44	33.8
FEMALES				
2005	73	2.8	6	4.7
2006	64	2.4	3	2.2
2007	74	2.8	5	4.1
2007				
Mar Qtr	80	3.0	4	3.3
Jun Qtr	78	2.9	6	4.5
Sep Qtr	67	2.5	6	4.7
Dec Qtr	71	2.7	5	3.6
2008				
Mar Qtr	74	2.7	4	2.7
Jan	75	2.8	2	1.3
Feb	72	2.7	4	3.1
Mar	74	2.7	5	3.7
PERSONS				
2005	835	16.2	82	33.1
2006	748	14.3	55	21.8
2007	759	14.4	60	23.0
2007				
Mar Qtr	743	14.1	53	20.8
Jun Qtr	769	14.7	66	25.4
Sep Qtr	748	14.2	67	25.5
Dec Qtr	775	14.7	54	20.4
2008				
Mar Qtr	696	13.2	43	16.2
Jan	729	13.8	39	14.7
Feb	680	12.8	41	15.4
Mar	679	12.8	49	18.5

- (a) Periodic detention is a form of custody only used in NSW and the ACT.
- (b) Imprisonment rates from the June quarter 2007 have been calculated using preliminary ERP rebased on the 2006 Census of Population and Housing – see Explanatory Notes, paragraphs 23–24.
- (c) ACT has reviewed the way it treats, and counts, periodic detention orders that have been breached. From the September quarter 2005 data may not be comparable with that previously published – see Explanatory Notes, paragraph 48.
- (d) Average daily number.
- (e) Rate per 100,000 adult population.

	NSW	Vic.	Qld	SA	WA	Tas.	NT	ACT	Aust.
MALES (NUMBER ON FIRST DAY OF MONTH)									
2005	322	73	68	12	77	8	11	4	575
2006	334	76	57	12	64	9	12	3	565
2007	338	76	66	14	52	5	16	5	572
2007									
Mar Qtr	333	74	64	7	54	3	16	3	554
Jun Qtr	338	77	63	10	49	2	18	5	561
Sep Qtr	340	75	66	14	50	9	15	5	574
Dec Qtr	344	77	70	25	54	7	14	6	598
2008									
Mar Qtr	327	75	65	24	51	3	12	3	560
FEMALES (NUMBER ON FIRST DAY OF MONTH)									
2005	48	6	15	4	9	2	1	1	85
2006	51	5	17	3	10	5	2	—	93
2007	58	5	16	2	7	3	—	—	93
2007									
Mar Qtr	56	6	15	2	8	3	1	—	91
Jun Qtr	55	6	14	2	7	2	—	—	87
Sep Qtr	56	5	20	2	8	4	—	—	96
Dec Qtr	65	4	16	2	7	3	—	1	97
2008									
Mar Qtr	70	5	22	1	8	4	—	—	110
PERSONS (NUMBER ON FIRST DAY OF MONTH)									
2005	369	79	83	16	85	11	12	5	660
2006	385	81	74	15	74	14	14	3	658
2007	396	81	82	16	59	9	16	5	664
2007									
Mar Qtr	388	80	79	9	61	7	17	3	645
Jun Qtr	393	83	77	12	56	4	18	5	648
Sep Qtr	396	80	86	16	58	13	15	6	669
Dec Qtr	409	81	86	26	61	11	14	7	695
2008									
Mar Qtr	397	80	87	25	59	7	12	3	670
Jan	409	82	84	26	61	7	14	4	687
Feb	393	80	88	25	59	np	12	np	667
Mar	389	79	88	24	57	np	10	np	655

— nil or rounded to zero (including null cells)

np not available for publication but included in totals where applicable, unless otherwise indicated

- (a) Counts reflect the state or territory in which a prisoner was sentenced, not where they were held in custody.
- (b) Figures for the quarter and year for the first day of the month counts are calculated as a simple average – see Explanatory Notes, paragraph 5.

	NSW	Vic.(c)	Qld	SA(d)	WA(e)	Tas.	NT	ACT	Aust.(c)(d)(e)
MALES (NUMBER ON FIRST DAY OF MONTH)									
2005	15 419	6 805	9 135	4 628	4 314	850	975	954	43 081
2006	15 140	6 214	9 468	4 552	4 203	935	1 011	914	42 438
2007	15 195	6 245	9 928	4 586	4 071	913	1 036	977	42 950
2007									
Mar Qtr	15 094	6 077	9 377	4 568	4 064	971	1 054	942	42 147
Jun Qtr	15 253	6 134	9 715	4 563	4 037	916	1 037	951	42 606
Sep Qtr	15 265	6 285	10 084	4 598	4 013	880	1 048	979	43 152
Dec Qtr	15 167	6 484	10 534	4 617	4 171	885	1 003	1 036	43 896
2008									
Mar Qtr	14 961	6 446	10 864	4 632	4 318	912	1 000	1 056	44 189
Jan	14 852	6 594	10 799	4 555	4 290	900	1 004	1 050	44 044
Feb	14 994	6 393	10 816	4 673	4 341	924	999	1 062	44 202
Mar	15 038	6 352	10 976	4 668	4 322	912	997	1 055	44 320
FEMALES (NUMBER ON FIRST DAY OF MONTH)									
2005	2 718	1 517	2 532	1 033	1 239	217	135	174	9 565
2006	2 649	1 345	2 656	1 045	1 192	249	144	168	9 447
2007	2 739	1 438	2 656	1 084	1 158	246	138	161	9 619
2007									
Mar Qtr	2 698	1 342	2 589	1 066	1 188	265	141	152	9 441
Jun Qtr	2 731	1 394	2 650	1 090	1 123	250	138	148	9 523
Sep Qtr	2 772	1 458	2 668	1 084	1 137	240	139	169	9 669
Dec Qtr	2 756	1 559	2 718	1 095	1 184	227	132	174	9 844
2008									
Mar Qtr	2 761	1 518	2 781	1 110	1 200	232	136	178	9 917
Jan	2 736	1 564	2 790	1 088	1 164	228	133	176	9 879
Feb	2 767	1 500	2 766	1 117	1 198	235	138	179	9 900
Mar	2 781	1 490	2 787	1 124	1 239	234	138	180	9 973
PERSONS (NUMBER ON FIRST DAY OF MONTH) (f)									
2005	18 200	8 384	11 667	5 672	5 553	1 067	1 110	1 128	52 782
2006	17 843	7 601	12 124	5 597	5 395	1 184	1 155	1 082	51 981
2007	18 002	7 710	12 584	5 671	5 229	1 159	1 173	1 138	52 665
2007									
Mar Qtr	17 860	7 449	11 966	5 635	5 252	1 236	1 196	1 094	51 687
Jun Qtr	18 061	7 552	12 365	5 653	5 160	1 166	1 175	1 099	52 232
Sep Qtr	18 107	7 769	12 752	5 683	5 150	1 120	1 187	1 148	52 916
Dec Qtr	17 980	8 069	13 253	5 712	5 354	1 111	1 134	1 209	53 823
2008									
Mar Qtr	17 777	7 989	13 645	5 742	5 518	1 144	1 136	1 234	54 185
Jan	17 641	8 184	13 589	5 643	5 454	1 128	1 137	1 226	54 002
Feb	17 814	7 917	13 582	5 790	5 539	1 159	1 137	1 241	54 179
Mar	17 877	7 865	13 763	5 792	5 561	1 146	1 135	1 235	54 374

- (a) With the exception of Vic. and Tas., includes persons with breached or suspended orders.
- (b) Figures for the quarter and year for first day of the month counts are calculated as a simple average – see Explanatory Notes, paragraph 5.
- (c) As of 1 July 2005, the definition of an adult changed in Vic. to a person aged 18 years and over – see Explanatory Notes, paragraph 38.
- (d) Data movements from June quarter 2005 may be influenced by data entry delays – see Explanatory Notes, paragraph 42.
- (e) Data prior to the March quarter 2007 may be slightly overstated – see Explanatory Notes, paragraph 43.
- (f) Includes persons whose sex is unknown.

	NSW	Vic. (d)	Qld	SA(e)	WA(f)	Tas.	NT	ACT	Aust. (d)(e)(f)
MALES (RATE PER 100,000 ADULT POPULATION)									
2005	606.2	359.2	610.8	790.5	572.7	475.4	1 296.4	783.2	563.3
2006	588.9	326.1	616.9	769.9	545.6	517.5	1 306.7	740.5	547.3
2007	588.6	320.2	629.2	764.7	512.8	500.7	1 307.0	766.0	544.2
2007									
Mar Qtr	582.7	315.3	601.3	767.2	519.4	534.8	1 337.0	755.7	537.6
Jun Qtr	593.6	315.0	617.5	761.9	509.8	503.1	1 315.9	744.9	541.4
Sep Qtr	591.8	320.9	636.5	764.3	502.9	481.7	1 321.3	762.0	545.4
Dec Qtr	586.4	329.7	660.8	765.5	519.2	483.6	1 254.5	800.9	552.4
2008									
Mar Qtr	576.5	326.3	677.9	766.0	533.8	497.1	1 239.2	814.6	553.7
Jan	572.3	333.8	673.9	753.3	530.4	490.6	1 244.1	810.3	551.9
Feb	577.7	323.6	675.0	772.8	536.7	503.7	1 238.0	819.5	553.9
Mar	579.4	321.5	684.9	771.9	534.3	497.1	1 235.5	814.1	555.3
FEMALES (RATE PER 100,000 ADULT POPULATION)									
2005	103.6	76.4	166.2	169.8	162.8	115.3	201.3	137.4	121.3
2006	100.0	67.4	170.6	170.4	153.8	131.2	211.0	130.8	118.4
2007	102.3	70.7	165.5	173.2	146.5	127.7	191.4	121.7	118.3
2007									
Mar Qtr	101.2	66.5	164.0	172.8	151.2	138.9	205.5	117.9	117.2
Jun Qtr	102.2	68.6	165.2	173.9	142.7	130.1	190.2	111.7	117.3
Sep Qtr	103.3	71.4	165.2	172.4	143.6	124.7	191.1	127.1	118.5
Dec Qtr	102.5	76.1	167.4	173.7	148.7	117.4	179.5	129.9	120.2
2008									
Mar Qtr	102.4	73.8	170.4	175.6	149.9	120.1	184.5	133.2	120.6
Jan	101.4	76.0	170.9	172.2	145.3	117.8	180.0	131.5	120.1
Feb	102.6	72.9	169.4	176.7	149.6	121.5	186.8	133.7	120.4
Mar	103.1	72.4	170.7	177.8	154.7	120.9	186.8	134.5	121.3
PERSONS (RATE PER 100,000 ADULT POPULATION) (g)									
2005	352.3	216.0	386.5	475.1	366.7	290.8	781.3	454.1	339.8
2006	341.9	194.7	392.2	464.7	349.0	319.5	794.1	430.1	330.4
2007	342.3	193.5	395.3	462.7	330.1	309.3	776.4	438.4	328.7
2007									
Mar Qtr	339.7	188.9	381.3	464.7	334.9	331.9	809.8	431.4	325.2
Jun Qtr	344.5	189.8	389.2	461.3	326.8	311.4	776.9	422.8	326.7
Sep Qtr	344.1	194.2	398.6	461.7	323.9	298.3	780.0	439.1	329.3
Dec Qtr	340.8	200.9	411.8	463.0	334.7	295.6	740.0	459.8	333.6
2008									
Mar Qtr	335.8	198.0	421.8	464.3	342.8	303.6	735.1	468.4	334.4
Jan	333.3	202.9	420.1	456.3	338.8	299.3	735.5	465.4	333.3
Feb	336.5	196.3	419.9	468.2	344.1	307.5	735.5	471.1	334.4
Mar	337.7	195.0	425.5	468.3	345.4	304.0	734.2	468.8	335.6

(a) Imprisonment rates from the June quarter 2007 have been calculated using preliminary ERP rebased on the 2006 Census of Population and Housing – see Explanatory Notes, paragraphs 23–24.

(b) With the exception of Vic. and Tas., includes persons with breached or suspended orders.

(c) Figures for the quarter and year for the first day of the month are calculated as a simple average – see Explanatory Notes, paragraph 5.

(d) As of 1 July 2005 the definition of an adult changed in Vic. to persons aged 18 years and over – see Explanatory Notes, paragraph 38.

(e) Data movements from the June quarter 2005 may be influenced by data entry delays – see Explanatory Notes, paragraph 42.

(f) Data prior to the March quarter 2007 may be slightly overstated – see Explanatory Notes, paragraph 43.

(g) Includes persons whose sex is unknown.

	NSW	Vic.(d)	Qld(e)	SA(f)	WA(g)	Tas.(h)	NT	ACT(i)	Aust.(j)
RESTRICTED MOVEMENT (NUMBER ON FIRST DAY OF MONTH)									
2005	218	21	80	362	20	..	52	2	755
2006	205	25	44	424	10	..	38	..	746
2007	197	31	..	391	5	..	34	..	659
2007									
Mar Qtr	209	26	..	418	4	..	38	..	696
Jun Qtr	229	30	..	390	4	..	30	..	683
Sep Qtr	208	35	..	396	6	..	36	..	681
Dec Qtr	143	34	..	358	7	..	33	..	575
2008									
Mar Qtr	122	34	..	375	7	..	33	..	571
Jan	111	34	..	359	7	..	26	..	537
Feb	130	35	..	380	7	..	33	..	585
Mar	126	34	..	385	7	..	39	..	591

	NSW	Vic.(d)	Qld(e)	SA(f)	WA(g)	Tas.(h)	NT	ACT(i)	Aust.(j)
REPARATION-FINE OPTION (NUMBER ON FIRST DAY OF MONTH)									
2005	128	1 735	1 488	803	279	110	1	..	4 544
2006	84	1 214	1 321	774	240	112	1	..	3 744
2007	49	1 710	843	702	192	85	—	..	3 580
2007									
Mar Qtr	70	1 359	966	710	198	96	—	..	3 399
Jun Qtr	60	1 581	974	686	196	83	—	..	3 580
Sep Qtr	42	1 819	806	704	172	79	—	..	3 622
Dec Qtr	24	2 080	624	707	203	80	—	..	3 718
2008									
Mar Qtr	15	2 032	564	662	195	67	—	..	3 534
Jan	16	2 139	550	667	216	70	—	..	3 658
Feb	17	2 012	560	655	193	67	—	..	3 504
Mar	13	1 946	581	663	175	63	—	..	3 441

	NSW	Vic.(d)	Qld(e)	SA(f)	WA(g)	Tas.(h)	NT	ACT(i)	Aust.(j)
REPARATION-COMMUNITY SERVICE (NUMBER ON FIRST DAY OF MONTH)									
2005	4 751	911	1 862	1 265	2 184	472	226	90	11 759
2006	4 436	876	2 045	1 125	1 967	501	198	85	11 233
2007	4 160	672	1 857	1 033	1 622	495	221	115	10 174
2007									
Mar Qtr	4 206	689	1 854	1 078	1 773	548	218	115	10 480
Jun Qtr	4 251	673	1 832	1 031	1 634	495	234	114	10 264
Sep Qtr	4 160	656	1 860	1 025	1 541	473	221	110	10 045
Dec Qtr	4 024	670	1 880	998	1 542	466	209	119	9 907
2008									
Mar Qtr	3 891	635	1 839	955	1 536	486	202	141	9 685
Jan	3 860	638	1 861	929	1 524	470	207	135	9 624
Feb	3 916	624	1 843	959	1 543	501	205	139	9 730
Mar	3 898	644	1 813	976	1 540	486	195	150	9 702

.. not applicable

— nil or rounded to zero (including null cells)

- (a) If a person has more than one type of order, they are counted against each order in this table. If a person has more than one order of the same order type, they are counted only once in the order type.
- (b) With the exception of Vic. and Tas., includes persons with breached or suspended orders.
- (c) Figures for the quarter and year for first day of the month counts are calculated as a simple average – see Explanatory Notes, paragraph 5.
- (d) As of 1 July 2005, the definition of an adult changed in Vic. to a person aged 18 years and over – see Explanatory Notes, paragraph 38.

- (e) From July 2006, restricted movement and parole orders have been affected by legislative changes – see Explanatory Notes, paragraph 40.
- (f) Data movements from the June quarter 2005 may be influenced by data entry delays – see Explanatory Notes, paragraph 42.
- (g) Data prior to the March quarter 2007 may be slightly overstated – see Explanatory Notes, paragraph 43.
- (h) Tas. introduced a trial of new court mandated Bail orders in mid-July 2007 – see Explanatory Notes, paragraph 45.
- (i) From September 2005, restricted movement orders were discontinued – see Explanatory Notes, paragraph 47.
- (j) See footnotes d, e, f, g, h and i.

	NSW	Vic.(d)	Qld(e)	SA(f)	WA(g)	Tas.(h)	NT	ACT(i)	Aust.(j)
SUPERVISION (COMPLIANCE)–PAROLE (NUMBER ON FIRST DAY OF MONTH)									
2005	4 155	1 576	908	920	1 332	91	140	141	9 262
2006	3 949	1 460	975	894	1 279	86	113	136	8 890
2007	4 058	1 413	2 290	882	1 143	81	99	117	10 083
2007									
Mar Qtr	3 985	1 416	1 532	915	1 199	76	106	125	9 354
Jun Qtr	4 015	1 413	2 028	898	1 099	79	97	115	9 744
Sep Qtr	4 073	1 418	2 542	866	1 083	85	97	113	10 277
Dec Qtr	4 160	1 404	3 058	850	1 190	84	97	115	10 958
2008									
Mar Qtr	4 161	1 476	3 420	872	1 293	82	96	118	11 518
Jan	4 203	1 488	3 361	863	1 258	81	95	118	11 467
Feb	4 155	1 464	3 383	869	1 293	84	96	119	11 463
Mar	4 126	1 476	3 517	883	1 327	81	98	116	11 624

	NSW	Vic.(d)	Qld(e)	SA(f)	WA(g)	Tas.(h)	NT	ACT(i)	Aust.(j)
SUPERVISION (COMPLIANCE)–BAIL (NUMBER ON FIRST DAY OF MONTH)									
2005	218	780	231	..	4	194	1 428
2006	214	888	243	..	4	174	1 523
2007	226	1 019	245	na	7	215	na
2007									
Mar Qtr	226	1 012	237	..	7	199	1 681
Jun Qtr	224	1 042	230	..	8	204	1 709
Sep Qtr	225	1 044	259	3	7	218	1 756
Dec Qtr	229	979	255	28	6	238	1 736
2008									
Mar Qtr	227	893	251	40	5	238	1 654
Jan	233	925	248	40	5	244	1 695
Feb	229	893	249	43	5	263	1 682
Mar	218	861	255	38	6	207	1 585

	NSW	Vic.(d)	Qld(e)	SA(f)	WA(g)	Tas.(h)	NT	ACT(i)	Aust.(j)
SUPERVISION (COMPLIANCE)–SENTENCED PROBATION (NUMBER ON FIRST DAY OF MONTH)									
2005	10 861	4 361	8 014	2 598	3 617	539	721	817	31 528
2006	10 923	4 294	8 855	2 631	3 556	642	837	784	32 523
2007	11 198	4 093	8 680	2 803	3 485	645	853	840	32 598
2007									
Mar Qtr	11 044	4 152	8 710	2 698	3 382	672	870	792	32 320
Jun Qtr	11 183	4 062	8 613	2 767	3 457	662	851	804	32 399
Sep Qtr	11 297	4 059	8 607	2 797	3 506	638	867	851	32 623
Dec Qtr	11 269	4 099	8 788	2 951	3 593	608	826	914	33 049
2008									
Mar Qtr	11 100	4 125	8 910	3 046	3 672	634	833	942	33 262
Jan	10 990	4 216	8 911	2 981	3 638	621	836	928	33 121
Feb	11 073	4 094	8 880	3 061	3 687	636	833	928	33 192
Mar	11 237	4 066	8 939	3 095	3 690	646	830	971	33 474

.. not applicable

na not available

- (a) If a person has more than one type of order, they are counted against each order in this table. If a person has more than one order of the same order type, they are counted only once in the order type.
- (b) With the exception of Vic. and Tas., includes persons with breached or suspended orders.
- (c) Figures for the quarter and year for first day of the month counts are calculated as a simple average – see Explanatory Notes, paragraph 5.
- (d) As of 1 July 2005, the definition of an adult changed in Vic. to a person aged 18 years and over – see Explanatory Notes, paragraph 38.

- (e) From July 2006, restricted movement and parole orders have been affected by legislative changes – see Explanatory Notes, paragraph 40.
- (f) Data movements from the June quarter 2005 may be influenced by data entry delays – see Explanatory Notes, paragraph 42.
- (g) Data prior to the March quarter 2007 may be slightly overstated – see Explanatory Notes, paragraph 43.
- (h) Tas. introduced a trial of new court mandated Bail orders in mid-July 2007 – see Explanatory Notes, paragraph 45.
- (i) From September 2005, restricted movement orders were discontinued – see Explanatory Notes, paragraph 47.
- (j) See footnotes d, e, f, g, h and i.

EXPLANATORY NOTES

INTRODUCTION

1 This publication presents statistical series on persons held in either adult corrective services custody or who are serving adult community-based orders in Australia. It contains data on the number of persons by their sex, Indigenous status, type of custody, legal status and sentence type; the number of sentenced persons received into corrective services custody each month; and the number of federal prisoners.

2 Statistics presented in this publication are compiled in three ways:

- Average daily prisoner population: Counts taken on each day of the month are summed and divided by the number of days in that month to determine the average daily prisoner population for that month. The average daily periodic detainee population is a count of persons on periodic detention on each day a centre is open, divided by the number of days a centre is open.
- Sentenced prisoner reception figures: Counts are provided each month on the number of receptions where a prisoner is received as a sentenced prisoner. This includes prisoners with a change of legal status from unsentenced to sentenced.
- First day of the month prisoner population: Counts of prisoners and persons serving community-based corrections orders, taken on or near the first day of the month (see Explanatory Notes, paragraphs 4 and 5).

3 Although national standards and classifications are used in the compilation of these statistics, some discrepancies remain between the states and territories. These are due to legislative and procedural differences between jurisdictions and the way that these differences are reflected in agencies' administrative data systems. As part of its quality assurance strategy, the ABS is working with corrective services agencies to minimise the effect of these differences.

REFERENCE PERIOD

4 The reference period for average daily prisoner population statistics and sentenced reception counts is the complete reference month. The reference date for all other figures is the first day of the reference month. However, not all states and territories report strictly according to this 'first day of the month' rule:

- The Western Australian, Victorian and Australian Capital Territory prisoners in New South Wales prisons populations are counted as at midnight on the last day of the month. In these cases the figures provided are taken to represent the prison population at the beginning of the following month to align with practices in other states and territories.

5 Calculation of figures for the entire quarter and entire year varies depending on the counting unit and method of counting prisoners:

- Average daily figures: Figures are calculated by weighting the average according to the number of days in each month or year.
- First day of the month: Figures are simple averages. For quarterly figures, the sum of the monthly data is divided by three; for yearly figures, the figures for each month are added and the total divided by twelve.
- Sentenced receptions: Figures are totals of each month.
- These figures may be subject to rounding.

SCOPE

6 The scope of the statistics in this publication includes all persons remanded or sentenced to adult custodial corrective services agencies (including Work Outreach Camps and Community Custody Centres in Queensland), or who are serving adult community-based orders in each state and territory in Australia.

EXPLANATORY NOTES *continued*

SCOPE *continued*

7 Counts of prisoners in the following custodial facilities are included in the collection:

- gazetted prisons in all jurisdictions
- periodic detention centres in New South Wales and the Australian Capital Territory
- community custody centres and work outreach camps in Queensland
- cells in court complexes administered by corrective services in New South Wales
- transitional centres in New South Wales
- lock-ups in Western Australia operated by the police but designated as a prison by the Chief Executive Officer of Corrective Services.

8 The prisons and community corrections collection excludes the following custodial facilities:

- police lockups, police prisons and cells in court complexes not administered and controlled by corrective services
- gazetted police prisons in the Northern Territory
- juvenile detention centres, including those under the authority of adult corrective services
- immigration detention centres
- military prisons.

9 This collection includes counts of persons remanded or sentenced to adult custody facilities, or directed to serve community based orders administered by adult corrective services agencies. In all states and territories except Queensland, persons are considered adults if aged 18 years and over. In Queensland persons are considered adults if aged 17 years and over. The vast majority of persons counted in the collection are adults. However, juveniles may be included in exceptional circumstances.

10 Since December 2004, the Kariiong Juvenile Correctional Centre in New South Wales has operated under the authority of adult corrective services. The population at Kariiong Juvenile Correctional Centre may include adult persons as well as juveniles. New South Wales includes juveniles based in Kariiong in this collection, however, this facility accounts for less than 0.5% of the New South Wales prisoner population.

11 Federal prisoners include those persons charged and sentenced under a Commonwealth statute, and those persons who are charged and sentenced under the laws of another country but transferred to an Australian prison to serve their sentence under the *International Transfer of Prisoners Act 1997* (Cwlth). To give practical effect to this legislation in Australia, the framework was introduced in January 2003. For the purposes of this publication, federal sentenced prisoners are those persons who are recognised by the Criminal Law Division of the Australian Government Attorney-General's Department as having been charged and sentenced under a Commonwealth statute, or transferred from another country to serve their sentence in Australia.

12 With the exception of Victoria and Tasmania, community-based corrections includes those persons with breached or suspended orders.

DATA SOURCE

13 Statistics in this publication are derived from information provided to the ABS from administrative records held by corrective services agencies within each state and territory. Statistics on federal prisoners are derived from records kept by the Criminal Law Division of the Australian Government Attorney-General's Department.

COUNTING RULES

14 Statistics for persons held in custody are presented by the state or territory in which they were held and therefore may not be the sentencing jurisdiction. The only exception to this are data for federal sentenced prisoners. These are presented by the state or territory in which they were sentenced, not where they were held in custody.

EXPLANATORY NOTES *continued*

COUNTING RULES *continued*

15 Sentenced prisoners who have other offences that are unsentenced are counted as sentenced. Prisoners may be unsentenced because they are awaiting the outcome of their trial, convicted but awaiting sentence, or awaiting deportation.

16 If an offender has two or more different types of community-based orders operating simultaneously, then each order will be counted. If two or more community-based orders are of the same type, these orders together will only be counted as one order.

AUSTRALIAN CAPITAL TERRITORY PRISONERS

17 Persons sentenced to full-time custody by the Australian Capital Territory are usually held in New South Wales prisons. The Australian Capital Territory has two remand centres for unsentenced prisoners and a periodic detention centre. During 2000 the Australian Capital Territory commenced detaining prisoners sentenced for fine default only at their remand centres. Unsented Australian Capital Territory prisoners may also be detained in New South Wales prisons.

18 To provide greater understanding of the number of prisoners attributed to the Australian Capital Territory, while presenting an accurate picture of the New South Wales prisoner population, statistics relating to Australian Capital Territory prisoners in New South Wales prisons are presented as a subset of the New South Wales figures.

19 Imprisonment rate data for the Australian Capital Territory are included in the publication and are calculated on the basis of the total number of Australian Capital Territory prisoners (i.e. Australian Capital Territory prisoners held in New South Wales prisons, and Australian Capital Territory prisoners held in the Australian Capital Territory) divided by the estimated resident Australian Capital Territory adult population and multiplied by 100,000. For New South Wales, the imprisonment rate is based on the count of New South Wales prisoners, excluding Australian Capital Territory prisoners held in New South Wales prisons, divided by the estimated resident New South Wales adult population and multiplied by 100,000. Time series data have also been derived on this basis.

RATES

20 Imprisonment and community-based corrections rates enable comparisons of prisoner numbers to be made across states and territories. Prisoner and community-based corrections rates are expressed per 100,000 adult population. Imprisonment rates are calculated based on two different counting concepts (average daily and first day of the month), as a result there may be variations in imprisonment rates presented in this publication.

21 In this publication the population figures used in the calculation of rates are for persons aged 18 years and over for all states and territories except Queensland where the population is persons aged 17 years and over (see Explanatory Notes, paragraph 9).

22 Rates for the total adult prisoner population and persons in community-based corrections are calculated using the estimated resident population (ERP) for each of the states and territories. All estimates for the Australian Capital Territory exclude Jervis Bay Territory. All estimates for Australia exclude the external territories of Christmas Island and the Cocos (Keeling) Island. As the population changes over time the denominator used for the calculation of rates varies, depending on the reference period. The most current ERP data available at the time of publication are used to calculate rates as follows:

- for the March quarter, ERP is from the previous September quarter;
- for the June quarter, ERP is from the previous December quarter;
- for the September quarter, ERP is from the previous March quarter;
- for the December quarter, ERP is from the previous June quarter; and
- annual rates are an average of the rates of the contributing quarters.

23 The ERP series are revised every five years to incorporate additional information available from the latest Census of Population and Housing. From the June quarter 2007, rates (except for Indigenous rates) are calculated using preliminary rebased data for the

EXPLANATORY NOTES *continued*

RATES *continued*

recent intercensal period (2001-2006) sourced from the 2006 Census of Population and Housing. All other data are calculated using ERP which is based on the 2001 Census of Population and Housing.

24 The impact of using the rebased preliminary ERP compared to ERP based on the 2001 Census of Population and Housing at the national level is negligible. Final ERP for the 5-year intercensal period is expected to be available in June 2008. For population estimates and information on the methodology used to produce the ERP, see *Australian Demographic Statistics* (cat.no.3101.0).

Indigenous imprisonment rates

25 Rates for the Indigenous adult population in this publication are based on the low series projections for 30 June of the current calendar year (refer to *Experimental Estimates and Projections, Aboriginal and Torres Strait Islander Australians, 30 June 1991 to 30 June 2009* (cat.no.3238.0)). These projections are based on the 2001 Census of Population and Housing. New series of Indigenous population projections are scheduled for release in 2009 and will be based on the 2006 Census of Population and Housing.

26 The low series are one of two series of these projections that have been published for the years 2002 to 2009.

- The low series assumes no 'unexplained growth' – that is, the Indigenous population recorded in the 2001 Census of Population and Housing is projected to change only as a result of births and deaths (natural increase) and, for the states and territories, as a result of interstate migration.
- The high series assumes that there will be 'unexplained growth' in the Indigenous population – that is, the Indigenous population is projected to change as a result of an unexplained component in addition to the effects of natural increase and interstate migration. The size of the unexplained component is based on the 'unexplained growth' observed between the 1996 and 2001 Censuses.

27 The decision to use the low series as the denominator in the calculation of Indigenous imprisonment rates from 2002 followed consultation with the National Corrective Services Statistics Unit Advisory Group and other stakeholders.

INDIGENOUS IDENTIFICATION

28 The ABS is currently evaluating the use of the ABS Indigenous identification standard in Corrective Services agencies (both custodial and community-based corrections). Whilst the ABS has published Indigenous status data in Corrective Services collections for a number of years, quality assurance is required to better understand the level of accuracy over time.

29 The quality of the Indigenous status information collected and recorded in Corrective Services agencies is assessed against the ABS Standard Indigenous Question (SIQ). The SIQ is based upon self-identification by the individual who comes into contact with Corrective Services agencies. The SIQ requires individuals to be asked "Are you of Aboriginal or Torres Strait Islander origin?" The answers to the SIQ can be 'No', 'Yes, Aboriginal', or 'Yes, Torres Strait Islander'. If the offender is of Aboriginal and Torres Strait Islander origin, both responses should be identified. If an offender does not supply an answer to this question, or is not asked, the Indigenous status field should be recorded as 'not stated'. The standard also requires that the SIQ fields are mandatory in corrective services agency recording systems in order to reinforce the asking of the question and assist in the maintenance of data quality.

EXPLANATORY NOTES *continued*

INDIGENOUS IDENTIFICATION

continued

30 As a result, the minimum output categories required in systems are:

- Aboriginal, but not Torres Strait Islander origin
- Torres Strait, but not Aboriginal origin
- Both Aboriginal and Torres Strait Islander origin
- Neither Aboriginal nor Torres Strait Islander origin
- Not stated/inadequately described

31 For custodial corrections, initial indications are that corrective services agencies in all states and territories, with the exception of Western Australia, ask the SIQ as described above.

32 There are however differences across the states and territories in relation to the recording processes for custodial data. In Tasmania, the Northern Territory and the Australian Capital Territory, individuals are asked the SIQ on each reception into corrective services custody, and it is mandatory to enter a response to this field in their recording systems. Victoria and Queensland do not re-ask the SIQ for every subsequent involvement that an individual has with corrective services, and data may also be sourced from other justice sources. In South Australia, it is a requirement for persons to be asked upon reception on each occasion in which they enter custody; however, it is not a mandatory field in their recording system. New South Wales does not have Indigenous status as a mandatory field in their recording systems and does not always re-ask the question for subsequent involvements. Western Australia does not currently comply with any component of the SIQ. For more information about Indigenous identification in community-based corrections refer to Appendix, page 36.

33 Some persons in custody are recorded with an unknown Indigenous status on the information systems of corrective agencies as their status has not been able to be obtained. Persons with Indigenous status unknown are excluded from tables 6, 7, 12 and 13. Counts of persons with an unknown Indigenous status are included in all other tables. Unknowns account for just over 1% of all records.

SIGNIFICANT EVENTS

New South Wales

34 In March 2008, the administrative classification of the Wellington Correctional Centre was altered. The classification was changed from 'open' to 'secure' for 75% of the facility to reflect the change in the profile of inmates held. As such, the proportion of persons in secure and open custody altered in the March quarter 2008 compared to previous quarters.

35 The administrative classification of the following NSW correctional facilities was altered at 1 July 2005: Cooma, Dilwynia, Parramatta and Berrima. These facilities changed classification from 'open' to 'secure' to reflect alterations in the profile of inmates held, and the operational requirements of those centres. As such, the proportion of persons in secure and open custody altered in the September quarter 2005 compared to previous quarters.

Victoria

36 The State government introduced an amnesty from February 2006 to May 2006 to encourage payment of unpaid fines. This resulted in a decrease in the number of persons serving a community-based order for fine default, particularly for the September quarter 2006.

37 In March 2006, Victoria opened Marngoneet Correctional Centre, Lara. The focus of this facility is to provide intensive treatment and offender management programs for males who have a minimum of six months of their sentence left to serve when they arrive there. The new Metropolitan Remand Centre at Ravenhall was opened in April 2006. The facility provides increased capacity to hold prisoners awaiting trial or sentencing.

EXPLANATORY NOTES *continued*

Victoria continued

38 On 1 July 2005 the *Children and Young Persons (Age Jurisdiction) Act 2004* came into force in Victoria. This Act changed the definition of a child from a person under 17 years of age to a person under 18 years of age. As a consequence the definition of an adult also changed for corrective services data to a person aged 18 years and over. Imprisonment rates for the September and December quarters 2005, and March quarter 2006 have been revised as a consequence. Data prior to 1 July 2005 includes persons aged 17 years.

Queensland

39 Quality assurance work conducted in Queensland during the September quarter 2007 resulted in the identification and elimination of duplicate and other records for the month of July 2007. Caution should be exercised when comparing data prior to the September quarter 2007.

40 *The Corrective Services Act 2006* (Qld) commenced on 26 August 2006. One key provision in the new legislation relates to the management of offenders subject to Court-ordered Parole. This new order ensures that offenders serve 100% of their sentence under supervision, either in a correctional centre or under community supervision. This new order provides courts with the power to specify a parole release date for persons sentenced to a term of imprisonment of 3 years or less. Technical breaches of parole orders are no longer heard by a parole board and can often result in a person serving the remainder of their original sentence in custody. Court-ordered Parole is not available to sex offenders or serious violent offenders.

41 In September 2005 Queensland implemented a new offender management system - the Integrated Offender Management System (IOMS). As a result data for the September quarter 2005, December quarter 2005, and March quarter 2006 were revised in June quarter 2006.

South Australia

42 Data on community-based correction orders extracted from the South Australian information system from the June quarter 2005 may be subject to data processing time lags.

Western Australia

43 Caution should be exercised when comparing community-based correction orders in Western Australia prior to the March quarter 2007 as data may have been slightly overstated.

44 In the June quarter 2005, Western Australia implemented a strategy to reduce the number of fine defaulters being taken into custody by offering alternative means of payment. This has resulted in a decrease in the number of sentenced receptions into custody for the September quarter 2005.

Tasmania

45 Tasmania introduced a trial of new orders for bail, suspended sentence and drug treatment as part of its Court Mandated Diversion program. The trial commenced mid July 2007 and is expected to continue for 12 months.

46 The new Risdon Prison Complex in Tasmania was opened on 28 August 2006. This complex includes the Mary Hutchison Women's Prison which was opened in May 2006. A new men's maximum/medium security facility was also built within the complex.

Australian Capital Territory

47 In September 2005, home detention orders were discontinued as a sentencing and remand option in the Australian Capital Territory.

48 From 1 July 2005, Australian Capital Territory periodic detainees who were in breach of an order for more than three months were excluded from counts. Consequently, the periodic detainee population decreased.

EXPLANATORY NOTES *continued*

RELATED PUBLICATIONS

ABS Publications

- 49** Other ABS publications that may be of interest include:
- Australian Demographic Statistics* (cat.no.3101.0) – issued quarterly
 - Australian Social Trends* (cat.no.4102.0) – issued annually
 - Australian Standard Offence Classification* (cat.no.1234.0) – irregular
 - Crime and Safety, Australia* (cat.no.4509.0) – released 26 April 2006
 - Criminal Courts, Australia* (cat.no.4513.0) – issued annually
 - Experimental Estimates and Projections, Aboriginal and Torres Strait Islander Australians, 30 June 1991 to 30 June 2009* (cat. no. 3238.0)
 - General Social Survey: Summary Results, Australia* (cat.no.4159.0) – irregular
 - Information Paper: Measuring Crime Victimisation, Australia: The Impact of Different Collection Methodologies* (cat.no.4522.0.55.001) – single issue
 - Information Paper: National Criminal Justice Statistical Framework* (cat.no. 4525.0) – single issue
 - Information Paper: National Information Development Plan for Crime and Justice Statistics 2005* (cat.no.4520.0) – single issue
 - Measures of Australia's Progress* (cat.no.1370.0) – issued annually
 - Personal Safety Survey* (cat.no.4906.0) – released 10 August 2006
 - Prisoners in Australia* (cat.no.4517.0) – issued annually
 - Recorded Crime – Victims, Australia* (cat.no.4510.0) – issued annually
 - Sexual Assault in Australia: A Statistical Overview* (cat.no.4523.0) – single issue
 - Year Book Australia* (cat.no.1301.0) – irregular

50 Current publications and other products released by the ABS are available from the ABS website <<http://www.abs.gov.au>>. The ABS also issues a daily Release Advice on the website that details products to be released in the week ahead. The National Centre for Crime and Justice Statistics releases *Crime and Justice News* (cat. no. 4500.0), an annual newsletter that is published on the ABS website. The Centre can be contacted by email through <crime.justice@abs.gov.au>.

Non-ABS Publications

- 51** Non-ABS sources that may be of interest include:
- Australian Institute of Criminology, *List of Publications* – irregular
<<http://www.aic.gov.au>>
 - Crime Research Centre, University of Western Australia, *Crime and Justice Statistics for Western Australia* – issued annually
<<http://www.crc.law.uwa.edu.au>>
 - Department of Corrective Services, New South Wales, *NSW Inmate Census* – irregular
<<http://www.dcs.nsw.gov.au>>
 - Department of Justice, Northern Territory, *Northern Territory Quarterly Crime and Justice Statistics* – issued quarterly
<<http://www.nt.gov.au/justice/>>
 - Department of Justice, Victoria, *Statistical Profile of the Victorian Prison System* – issued annually
<<http://www.justice.vic.gov.au>>
 - NSW Bureau of Crime Statistics and Research, *New South Wales Criminal Courts Statistics* – issued annually
<<http://www.lawlink.nsw.gov.au>>
 - Office of Crime Statistics and Research, *South Australia, Crime and Justice in South Australia* – issued annually
<<http://www.ocsar.sa.gov.au>>
 - Steering Committee for the Review of Commonwealth/State Service Provision, *Report on Government Services* – issued annually
<<http://www.pc.gov.au>>

APPENDIX EXPERIMENTAL COMMUNITY-BASED CORRECTIONS DATA

INTRODUCTION

This appendix presents experimental data for Indigenous persons in community-based corrections. Data are presented as the number of Indigenous persons on community-based corrections orders on the first day of the month.

An initial evaluation of the quality of Indigenous identification by the ABS in community-based corrections has highlighted that currently no jurisdiction is fully complying with the ABS Standard Indigenous Question (SIQ - see Explanatory Notes, paragraph 29); therefore, care should be taken when referring to this data. The extent to which jurisdictions are complying with the standard varies. Currently, Tasmania is complying with most SIQ requirements, but does not necessarily re-ask the question on each occasion that an individual commences an order under corrective services supervision. The remaining jurisdictions have more significant issues to overcome before they comply with the SIQ, and the ABS will continue to work with states and territories to better understand and improve the quality of this data item. It should be noted that at the time of publication, the SIQ recording processes applied in the Australian Capital Territory are yet to be confirmed.

APPENDIX EXPERIMENTAL COMMUNITY-BASED CORRECTIONS DATA

continued

A1 PERSONS IN COMMUNITY-BASED CORRECTIONS, By Indigenous status(a)(b)

	NSW	Vic. (c)	Qld	SA(d)	WA(e)	Tas.	NT	ACT	Aust. (f)
INDIGENOUS (NUMBER ON FIRST DAY OF MONTH)									
2005	2 842	378	2 054	714	1 638	111	777	100	8 613
2006	2 908	324	2 146	746	1 777	141	846	81	8 969
2007	3 198	341	2 267	816	1 643	137	880	100	9 380
2007									
Mar Qtr	3 103	312	2 132	791	1 694	140	896	93	9 162
Jun Qtr	3 176	327	2 178	800	1 634	137	884	98	9 235
Sep Qtr	3 282	353	2 323	837	1 584	135	888	102	9 504
Dec Qtr	3 229	370	2 436	834	1 660	134	853	105	9 621
2008									
Mar Qtr	3 134	355	2 461	850	1 762	132	858	106	9 658
Jan	3 143	364	2 457	836	1 727	134	861	108	9 630
Feb	3 125	343	2 456	854	1 762	135	860	108	9 643
Mar	3 135	358	2 471	859	1 798	126	853	101	9 701
NON-INDIGENOUS (NUMBER ON FIRST DAY OF MONTH)									
2005	14 062	7 143	9 227	4 588	3 907	756	330	806	40 817
2006	13 835	6 675	9 978	4 793	3 613	946	307	876	41 024
2007	13 843	6 707	10 317	4 809	3 580	970	291	959	41 476
2007									
Mar Qtr	13 701	6 531	9 833	4 789	3 557	989	297	939	40 636
Jun Qtr	13 824	6 607	10 188	4 802	3 525	991	290	929	41 156
Sep Qtr	14 010	6 727	10 429	4 801	3 559	958	298	958	41 740
Dec Qtr	13 836	6 965	10 817	4 843	3 678	940	281	1 011	42 370
2008									
Mar Qtr	13 792	7 048	11 183	4 862	3 739	953	276	1 016	42 869
Jan	13 633	7 041	11 132	4 781	3 715	942	275	1 015	42 534
Feb	13 887	7 078	11 126	4 908	3 759	962	275	1 019	43 014
Mar	13 857	7 024	11 292	4 897	3 742	954	279	1 014	43 059
UNKNOWN (NUMBER ON FIRST DAY OF MONTH)									
2005	1 296	864	386	370	8	200	4	223	3 351
2006	1 101	602	—	58	4	97	2	125	1 988
2007	962	662	—	46	6	52	2	79	1 809
2007									
Mar Qtr	1 057	606	—	54	1	107	3	62	1 889
Jun Qtr	1 061	618	—	50	2	38	1	72	1 842
Sep Qtr	815	689	—	45	7	27	1	88	1 672
Dec Qtr	915	734	—	35	16	37	1	93	1 832
2008									
Mar Qtr	851	586	—	30	17	60	2	112	1 658
Jan	865	779	—	26	12	52	1	103	1 838
Feb	802	496	—	28	18	62	2	114	1 522
Mar	885	483	—	36	21	66	3	120	1 614

— nil or rounded to zero (including null cells)

(a) With the exception of Vic. and Tas., includes persons with breached or suspended orders.

(b) Figures for the quarter and year for first day of the month counts are calculated as a simple average – see Explanatory Notes, paragraph 5.

(c) As of 1 July 2005, the definition of an adult changed in Vic. to a person aged 18 years and over – see Explanatory Notes, paragraph 38.

(d) Data movements from June quarter 2005 may be influenced by data entry delays – see Explanatory Notes, paragraph 42.

(e) Data prior to the March quarter 2007 may be slightly overstated – see Explanatory Notes, paragraph 43.

(f) See footnotes c, d and e.

APPENDIX EXPERIMENTAL COMMUNITY-BASED CORRECTIONS DATA
continued

A1 PERSONS IN COMMUNITY-BASED CORRECTIONS, By Indigenous status(a)(b) *continued*

	NSW	Vic. (c)	Qld	SA(d)	WA(e)	Tas.	NT	ACT	Aust. (f)
PERSONS (NUMBER ON FIRST DAY OF MONTH)									
2005	18 200	8 384	11 667	5 672	5 553	1 067	1 110	1 128	52 782
2006	17 843	7 601	12 124	5 597	5 395	1 184	1 155	1 082	51 981
2007	18 002	7 710	12 584	5 671	5 229	1 159	1 173	1 138	52 665
2007									
Mar Qtr	17 860	7 449	11 966	5 635	5 252	1 236	1 196	1 094	51 687
Jun Qtr	18 061	7 552	12 365	5 653	5 160	1 166	1 175	1 099	52 232
Sep Qtr	18 107	7 769	12 752	5 683	5 150	1 120	1 187	1 148	52 916
Dec Qtr	17 980	8 069	13 253	5 712	5 354	1 111	1 134	1 209	53 823
2008									
Mar Qtr	17 777	7 989	13 645	5 742	5 518	1 144	1 136	1 234	54 185
Jan	17 641	8 184	13 589	5 643	5 454	1 128	1 137	1 226	54 002
Feb	17 814	7 917	13 582	5 790	5 539	1 159	1 137	1 241	54 179
Mar	17 877	7 865	13 763	5 792	5 561	1 146	1 135	1 235	54 374

(a) With the exception of Vic. and Tas., includes persons with breached or suspended orders.

(b) Figures for the quarter and year for first day of the month counts are calculated as a simple average – see Explanatory Notes, paragraph 5.

(c) As of 1 July 2005, the definition of an adult changed in Vic. to a person aged 18 years and over – see Explanatory Notes, paragraph 38.

(d) Data movements from June quarter 2005 may be influenced by data entry delays – see Explanatory Notes, paragraph 42.

(e) Data prior to the March quarter 2007 may be slightly overstated – see Explanatory Notes, paragraph 43.

(f) See footnotes c, d and e.

APPENDIX EXPERIMENTAL COMMUNITY-BASED CORRECTIONS DATA

continued

A2 PROPORTION OF PERSONS IN COMMUNITY-BASED CORRECTIONS, By Indigenous status(a)(b)

	NSW	Vic. (c)	Qld	SA(d)	WA(e)	Tas.	NT	ACT	Aust. (f)
INDIGENOUS (%)									
2005	15.6	4.5	17.6	12.6	29.5	10.4	69.9	8.8	16.3
2006	16.3	4.3	17.7	13.3	32.9	11.9	73.3	7.4	17.3
2007	17.8	4.4	18.0	14.4	31.4	11.8	75.0	8.8	17.8
2006									
Dec Qtr	17.2	4.3	17.5	13.9	32.9	11.0	73.7	7.7	17.6
2007									
Mar Qtr	17.4	4.2	17.8	14.0	32.3	11.3	74.9	8.5	17.7
Jun Qtr	17.6	4.3	17.6	14.2	31.7	11.7	75.2	8.9	17.7
Sep Qtr	18.1	4.5	18.2	14.7	30.8	12.1	74.8	8.9	18.0
Dec Qtr	18.0	4.6	18.4	14.6	31.0	12.1	75.2	8.7	17.9
Oct	18.1	4.6	18.9	14.9	30.7	12.3	74.6	8.6	18.0
Nov	17.9	4.7	18.2	14.5	31.1	11.8	75.6	8.8	17.8
Dec	17.9	4.5	18.0	14.4	31.2	12.1	75.3	8.7	17.8
NON-INDIGENOUS (%)									
2005	77.3	85.2	79.1	80.9	70.4	70.8	29.7	71.4	77.3
2006	77.5	87.8	82.3	85.6	67.0	79.9	26.6	81.0	78.9
2007	76.9	87.0	82.0	84.8	68.5	83.7	24.8	84.3	78.8
2006									
Dec Qtr	77.1	87.6	82.5	85.2	67.0	78.8	26.1	86.1	78.8
2007									
Mar Qtr	76.7	87.7	82.2	85.0	67.7	80.0	24.8	85.8	78.6
Jun Qtr	76.5	87.5	82.4	85.0	68.3	85.0	24.7	84.5	78.8
Sep Qtr	77.4	86.6	81.8	84.5	69.1	85.6	25.1	83.4	78.9
Dec Qtr	77.0	86.3	81.6	84.8	68.7	84.6	24.7	83.6	78.7
Oct	77.4	86.4	81.1	84.6	69.1	84.9	25.3	83.9	78.8
Nov	76.6	86.3	81.8	84.9	68.6	84.8	24.3	83.4	78.6
Dec	76.8	86.3	82.0	84.9	68.4	84.0	24.6	83.4	78.8
UNKNOWN (%)									
2005	7.1	10.3	3.3	6.5	0.1	18.7	0.4	19.7	6.3
2006	6.2	7.9	—	1.0	0.1	8.2	0.2	11.6	3.8
2007	5.3	8.6	—	0.8	0.1	4.5	0.1	6.9	3.4
2006									
Dec Qtr	5.8	8.1	—	0.9	0.1	10.2	0.1	6.2	3.6
2007									
Mar Qtr	5.9	8.1	—	1.0	—	8.7	0.3	5.7	3.7
Jun Qtr	5.9	8.2	—	0.9	—	3.3	0.1	6.5	3.5
Sep Qtr	4.5	8.9	—	0.8	0.1	2.4	0.1	7.7	3.2
Dec Qtr	5.1	9.1	—	0.6	0.3	3.3	0.1	7.7	3.4
Oct	4.5	9.1	—	0.5	0.2	2.8	0.1	7.5	3.2
Nov	5.5	9.1	—	0.6	0.3	3.3	0.1	7.8	3.5
Dec	5.3	9.2	—	0.7	0.4	3.9	0.1	7.9	3.5

— nil or rounded to zero (including null cells)

(a) With the exception of Vic. and Tas., includes persons with breached or suspended orders.

(b) Figures for the quarter and year for first day of the month counts are calculated as a simple average – see Explanatory Notes, paragraph 5.

(c) As of 1 July 2005, the definition of an adult changed in Vic. to a person aged 18 years and over – see Explanatory Notes, paragraph 38.

(d) Data movements from June quarter 2005 may be influenced by data entry delays – see Explanatory Notes, paragraph 42.

(e) Data prior to the March quarter 2007 may be slightly overstated – see Explanatory Notes, paragraph 43.

(f) See footnotes c, d and e.

GLOSSARY

Bail	This is generally a pre-sentence option where a person is released into the community for a period before they appear in court for trial or final sentencing. Bail orders can require a financial surety to be lodged with the court, and a number of conditions including supervision and residential requirements designed to ensure the re-appearance of the person at court. Bail counts are available only in states and territories where bail orders are supervised by corrective services. Bail is a sub-category of Supervision where the person is under the supervision of corrective services (<i>see</i> Supervision).
Community-based corrections	This refers to the community-based management of court-ordered sanctions, post-prison administrative arrangements and fine conversions, which principally involve the provision of one or more of the following activities: supervision, programs or community work.
Community service	This category of community-based corrections orders includes sentencing options requiring offenders to undertake a specified number of hours of unpaid, supervised work to benefit the community on an approved project. Community service is a sub-category of Reparation (<i>see</i> Reparation).
Corrective services custody	Confinement in a place intended primarily for the purpose of confining prisoners, such as a prison, prison farm, Periodic Detention Centre or Community Custody Centre.
Federal sentenced prisoner	Persons charged and sentenced under a Commonwealth statute or transferred from another country to serve their sentence in Australia.
Fine option	A community-based sentence type where the offender is serving a sentence for default of a fine. In most jurisdictions this order type requires an offender to complete community service as a reparatory act. Fine option is a sub-category of Reparation (<i>see</i> Reparation).
Full-time prison custody	A type of custody where a prisoner is required to be held in custody on a full-time basis. This includes prisons, Queensland Community Custody Centres and work outreach camps. Full-time prison custody excludes periodic detention (<i>see</i> Periodic detention).
Home detention	(<i>see</i> Restricted movement)
Indigenous prisoner	A prisoner who identifies as being of Aboriginal or Torres Strait Islander origin, or both.
Legal status	A person may be either sentenced or unsentenced depending on the warrant(s) or court order(s) that provide the legal basis for the administration of the person through the criminal justice system.
Open custody	Refers to prisoners housed in minimum security custodial facilities that do not require them to be confined by a secure perimeter physical barrier, irrespective of whether a physical barrier exists.
Parole	A parole order is made following a period of imprisonment and requires an offender to be subject to supervision in the community. Additional conditions may also be applied such as programs, counselling or drug testing. Parole is a sub-category of Supervision (<i>see</i> Supervision).
Periodic detention	A type of custody or order where a sentenced prisoner is required to be held in custody on a part-time basis. Currently this consists of two consecutive days in a one-week period, while remaining at liberty during the rest of the week.
Prisoner	A person held in custody. For the purposes of this collection, prisoners are those whose confinement is the responsibility of a corrective services agency.
Remand	(<i>see</i> Unsentenced)
Reparation	Reparation refers to all offenders with an order that requires them to undertake unpaid, justice agency-approved community service work.

GLOSSARY *continued*

Restricted movement	This refers to persons who are subject to a system of restricted movement, including supervision and/or electronic monitoring. This category includes home detention that may restrict residence to a nominated place. Restricted movement can be either a pre-sentence or post-sentence order.
Secure custody	Refers to prisoners housed in medium or maximum security custodial facilities requiring them to be confined by a secure physical barrier.
Sentenced	A legal status indicating that a person has received a custodial or community-based order from a court in response to a conviction for an offence.
Sentenced prisoner reception	Refers to entry into corrective services custody from the community, having received a sentence of imprisonment as an outcome of a court proceeding; or persons who are sentenced to custody while in custody on remand (i.e. changed status from a remand to a sentenced prisoner); or persons entering custody as a result of defaulting on the payment of a fine. Sentenced prisoners in custody who receive a further sentence of imprisonment are not counted as sentenced receptions.
Sentenced probation	A supervision order made following an original sentence handed down in court following conviction. A probation order generally requires 'good behaviour' and compliance with the directions of supervisors. The order may also require compliance with conditions such as program attendance and residential requirements.
Supervision (compliance)	This includes community-based orders other than those categorised as restricted movement or reparation (e.g. parole, bail and sentenced probation).
Unsentenced	A legal status indicating that a person is confined to custody or supervision while awaiting the outcome of their trial.

FOR MORE INFORMATION . . .

INTERNET **www.abs.gov.au** the ABS website is the best place for data from our publications and information about the ABS.

INFORMATION AND REFERRAL SERVICE

Our consultants can help you access the full range of information published by the ABS that is available free of charge from our website. Information tailored to your needs can also be requested as a 'user pays' service. Specialists are on hand to help you with analytical or methodological advice.

PHONE 1300 135 070

EMAIL client.services@abs.gov.au

FAX 1300 135 211

POST Client Services, ABS, GPO Box 796, Sydney NSW 2001

FREE ACCESS TO STATISTICS

All statistics on the ABS website can be downloaded free of charge.

WEB ADDRESS www.abs.gov.au